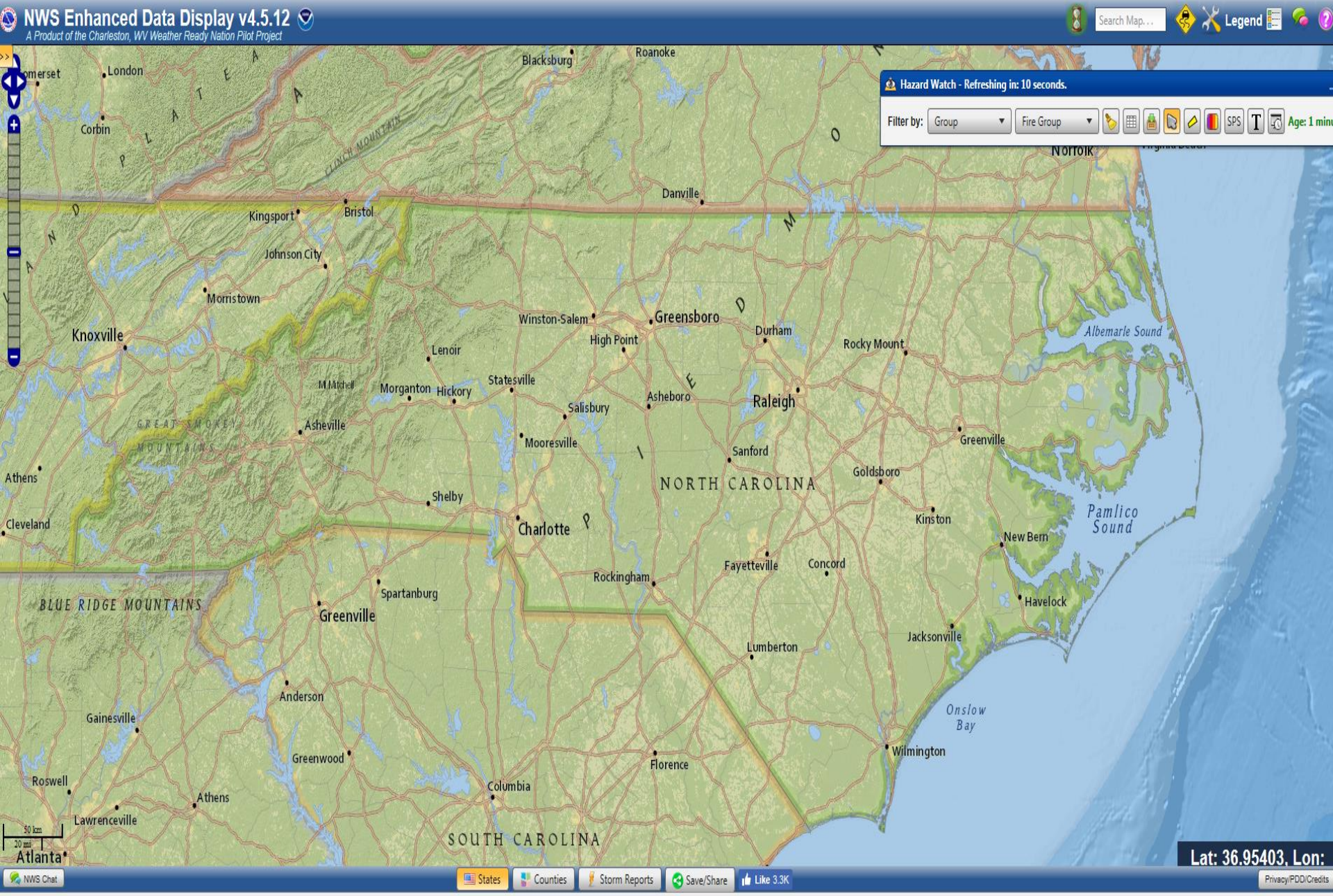


NWS Enhanced Data Display



What is the EDD

- A function developed by a team of forecasters at NWS Charleston, WV in the era of decision support services.
- A relatively simple method to obtain/retrieve current and predicted weather parameters for almost any point in the contiguous U.S.
- Weather information can be presented in a variety of formats (text, graphical, tabular)

www.weather.gov



NATIONAL WEATHER SERVICE

NATIONAL OCEANIC AND ATMOSPHERIC ADMINISTRATION



[HOME](#) [FORECAST](#) [PAST WEATHER](#) [SAFETY](#) [INFORMATION](#) [EDUCATION](#) [NEWS](#) [SEARCH](#) [ABOUT](#)

Local forecast by
"City, St" or ZIP code

[Location Help](#)

Stormy and Wet in the East; Fire Weather Threats Continue in the West

A nearly stalled frontal boundary is directing copious Gulf moisture northward, and producing areas of heavy rain. Strong to severe storms containing damaging winds, and potential for large hail and a few tornadoes is forecast in the eastern states. Temperatures moderate, but breezy and dry conditions with isolated dry thunderstorms will continue in the west; exacerbating fire and smoke threats. [Read More >](#)



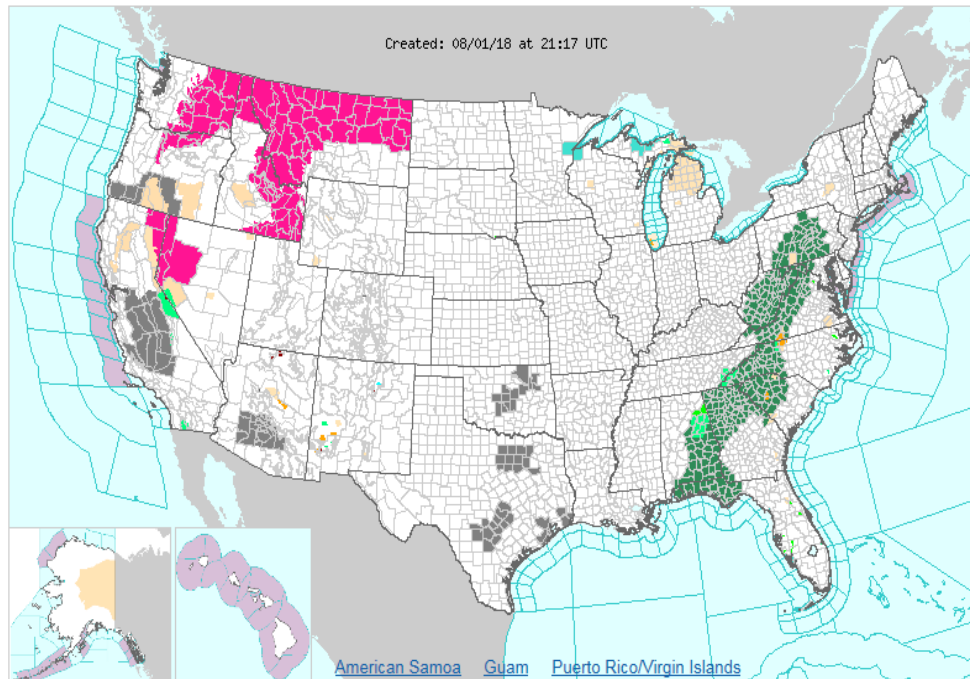
[ACTIVE ALERTS](#) [FORECAST MAPS](#) [RADAR](#) [RIVERS, LAKES, RAINFALL](#) [AIR QUALITY](#) [SATELLITE](#) [PAST WEATHER](#)

Customize Your Weather.gov

Enter Your City, ST or
ZIP Code

☐ Remember Me

[Privacy Policy](#)




Click on the map above for detailed alerts or

[Warnings By State](#) ▼

[Public Alerts in XML/CAP v1.1 and ATOM Formats](#)

www.weather.gov/rah

**NATIONAL WEATHER SERVICE**
NATIONAL OCEANIC AND ATMOSPHERIC ADMINISTRATION

HOMEFORECASTPAST WEATHERSAFETYINFORMATIONEDUCATIONNEWSSEARCHABOUT

Local forecast by
"City, ST" or ZIP code

[Location Help](#)

News Headlines

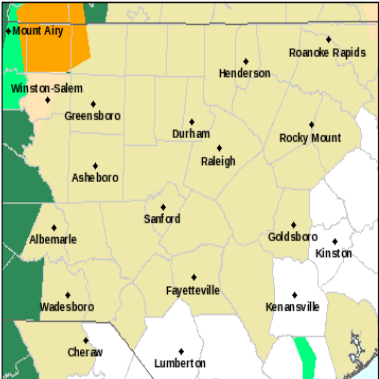
- [Click here to check out the latest news from NWS Raleigh!](#)
- [NWS Raleigh to Issue New Tropical Products and Launch Tropical Webpage](#)

NWS Forecast Office, Raleigh, NC
[Weather.gov](#) > Raleigh, NC

Raleigh, NC
Weather Forecast Office

Current HazardsCurrent ConditionsRadarForecastsRivers and LakesClimate and Past WeatherLocal Programs


Click a location below for detailed forecast.


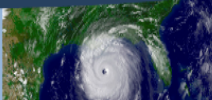




Map labels: Mount Airy, Winston-Salem, Greensboro, Durham, Raleigh, Rocky Mount, Henderson, Sanford, Goldsboro, Kinston, Albemarle, Fayetteville, Wadesboro, Cheraw, Lumberton, Kenansville.



Last Map Update: Wed, Aug. 1, 2018 at 5:12:30 pm EDT

[Watches, Warnings & Advisories](#)
[Severe Thunderstorm Warning](#)
[Flood Warning](#)
[Flash Flood Watch](#)
[Flood Advisory](#)
[Beach Hazards Statement](#)
[Special Weather Statement](#)
[Hazardous Weather Outlook](#)



**NWS Raleigh Provides New Tropical Forecast Products**


**Are You Prepared For Severe Weather Season?**


**Be Prepared for Summer Heat With These Safety Tips!**




NEW TROPICAL PRODUCTS



PREPARE FOR SEVERE WX



HEAT SAFETY TIPS



[Radar](#)



[Current Weather](#)



[Rivers & Lakes](#)



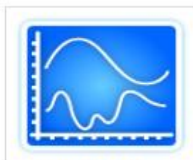
[Satellite](#)



[Weather Information Display](#)



[Forecast Maps](#)



[Hour by Hour Forecast](#)



[Climate Plots](#)



[Text Bulletins](#)



[Fire Weather](#)



[Tropical Weather](#)



[SKYWARN](#)



[Forecaster Discussion](#)



[Drought Information](#)



[Weather Hazard Briefing](#)



[Heat Safety](#)



[Beach Forecasts](#)

Follow us on Twitter

Follow us on Facebook

Follow us on YouTube

RAH RSS Feed

RESEARCH

Science Program
CSTAR Project
Past Events
CIMMSE blog

SATELLITE IMAGERY

Raleigh Sector
Regional/US Sector

NOAA WEATHER RADIO

Audio
Schedule
FIPS Codes
Stations
NC Network

MODEL DATA

NCEP Models
Reflectivity Forecasts
MOS Data
TRENDS Nomogram
Buftkit Data
Local WRF
Weather Models Info (pdf)

WEATHER SAFETY

Skywarn
Preparedness
Submit Your Weather Report
Heat Awareness
Storm Ready

OFFICE INFORMATION

Office Staff
NWS Raleigh News
Tour Request
Virtual Tour
Office Newsletter Archive
Office Brochure
Office History

OTHER PROGRAMS

COOP
Classroom Weather
CoCoRaHS

WEB SITE INFO

Contact Us
Frequently Asked Questions



NATIONAL WEATHER SERVICE

NATIONAL OCEANIC AND ATMOSPHERIC ADMINISTRATION

[HOME](#)[FORECAST](#)[PAST WEATHER](#)[SAFETY](#)[INFORMATION](#)[EDUCATION](#)[NEWS](#)[SEARCH](#)[ABOUT](#)

Local forecast by
"City, ST" or ZIP code

[Location Help](#)

News Headlines

- [Click here to check out the latest news from NWS Raleigh!](#)
- [NWS Raleigh to Issue New Tropical Products and Launch Tropical Webpage](#)

Customize Your Weather.gov

Enter Your City, ST or
ZIP Code

☐ Remember Me[Privacy Policy](#)

Fire Weather Forecast

[Weather.gov](#) > [Raleigh, NC](#) > Fire Weather Forecast

Raleigh, NC
Weather Forecast Office

[Current Hazards](#) [Current Conditions](#) [Radar](#) [Forecasts](#) [Rivers and Lakes](#) [Climate and Past Weather](#) [Local Programs](#)

WFO Raleigh Fire Weather Program:

The NWS office in Raleigh provides spot forecasts for any wildfire within our county warning area. For prescribed burns, requests will only be honored from federal agencies. Our office also provides a Fire Weather Forecast for our county warning area. Details about our fire weather program can be found in our Fire Weather Operating Plan - [Operating Plan in Adobe PDF format](#).

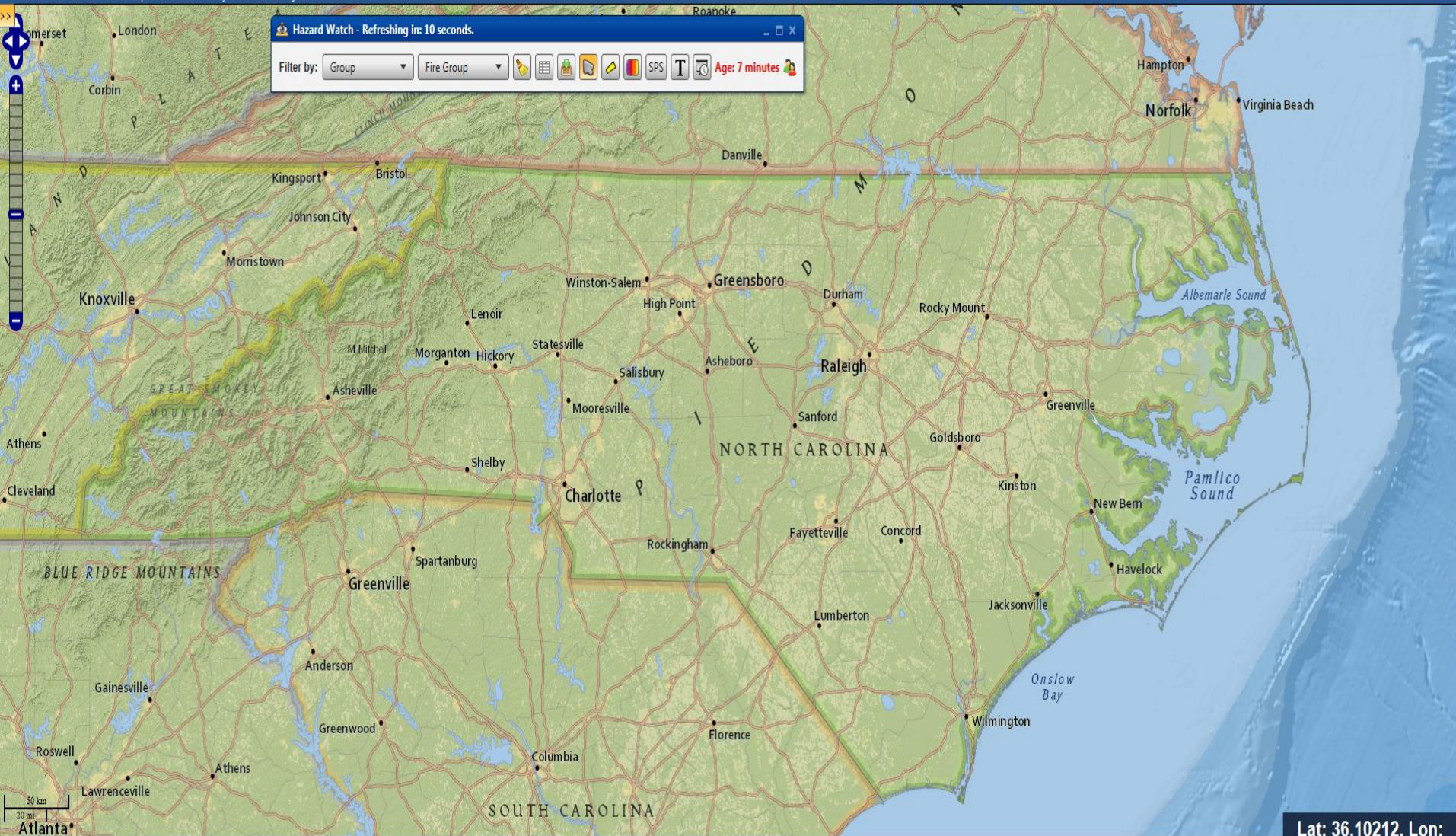
- **[One-Stop Fire Weather Page for North Carolina \(when map opens, click on location of interest for detailed fire forecast\)](#)**
- [Fire weather graphics page](#)
- [Forecast table. Click on map for tabular forecast; select desired fire weather element](#)

Raleigh Forecast Products:

- [Raleigh Fire Weather Forecasts \(FWF\)](#)
- [Raleigh Fire Weather Point Forecast Matrices \(PFW\)](#)
- [Raleigh Fire Danger Rating Forecast \(FWM\)](#)
- [Raleigh Red Flag Warning \(RFW\)](#)

Fire Weather Forecasts and Outlooks from Around NC :

- [Newport-Morehead City, NC](#)
- [Wilmington, NC](#)
- [Blacksburg, VA](#)
- [Wakefield, VA](#)
- [Greenville-Spartanburg, SC](#)
- [Columbia, SC](#)
- [Morristown, TN](#)

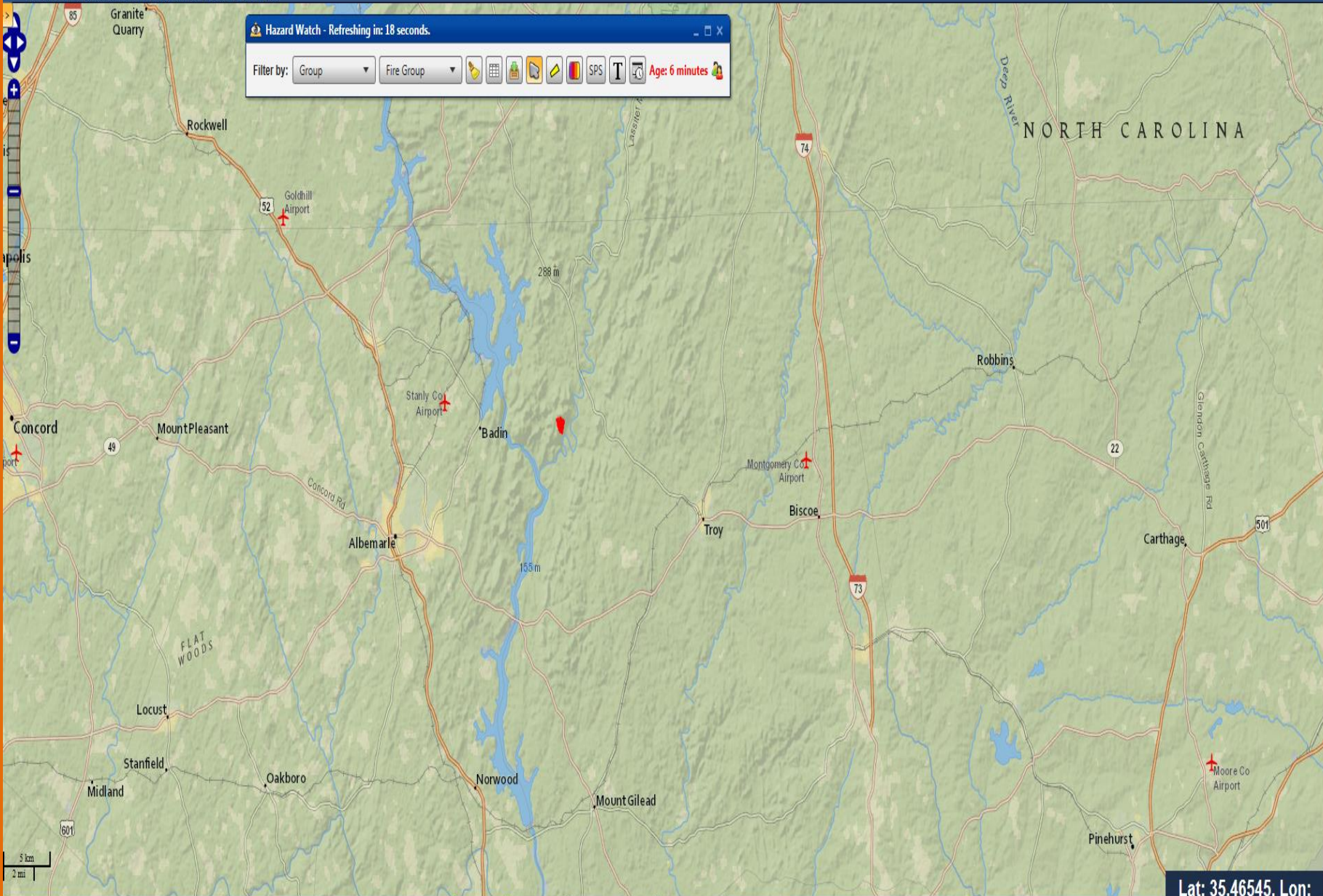


Lat: 36.10212, Lon:

Hazard Watch - Refreshing in: 18 seconds.

Filter by: Group Fire Group

Age: 6 minutes



Lat: 35.46545, Lon:

Fire Zone Forecast

Hourly Graph

Tabular

Request Spot

Routine Fire WX Fcst (with/without 6-10 Day Outlook)

Issued by NWS Raleigh, NC

Product Version: 2018-07-29 19:53 UTC

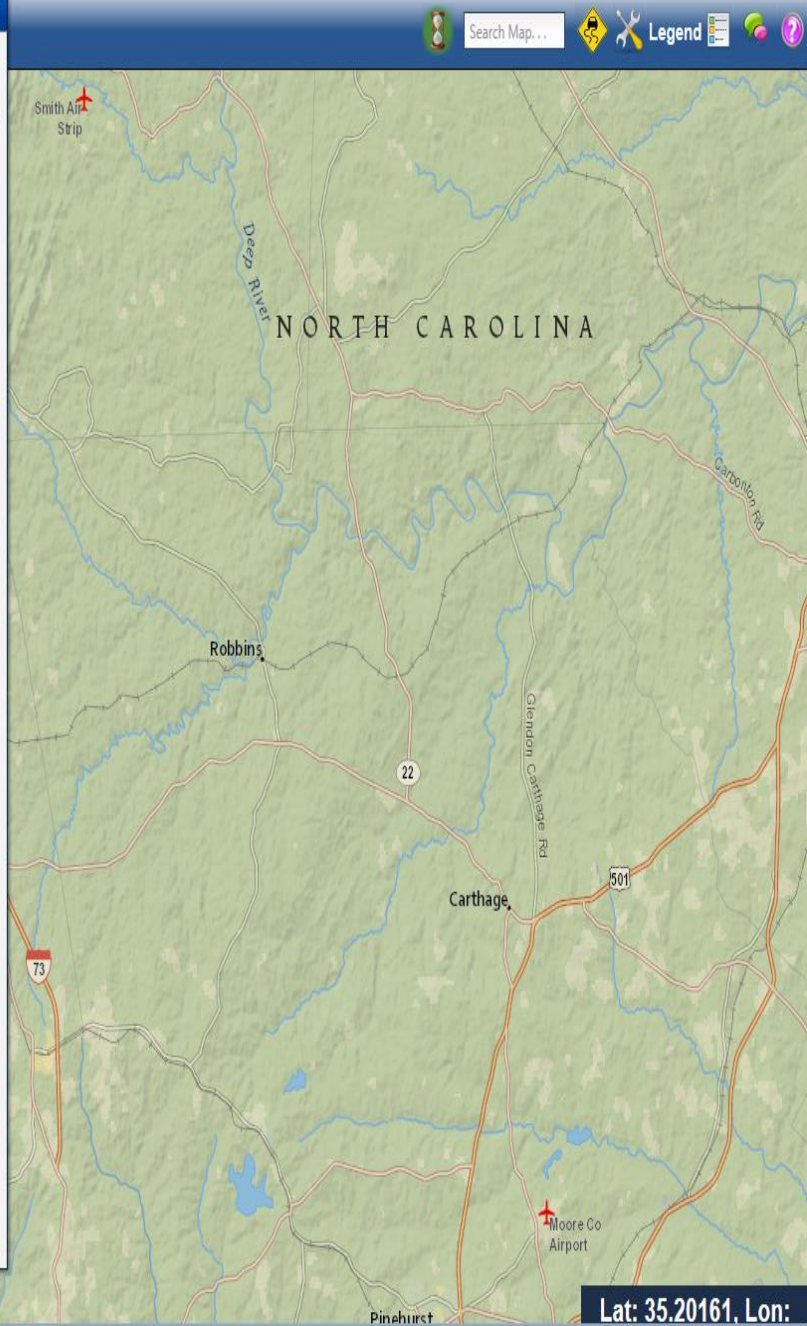
296
FNUS52 KRAH 291953
FWFRAH

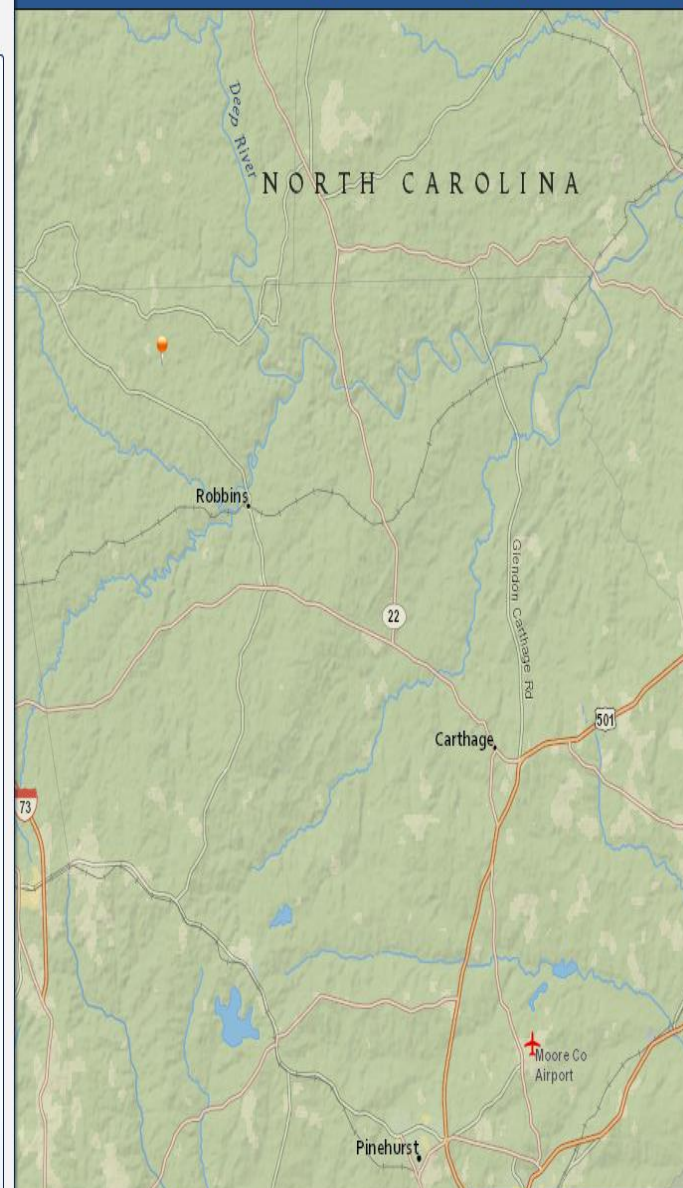
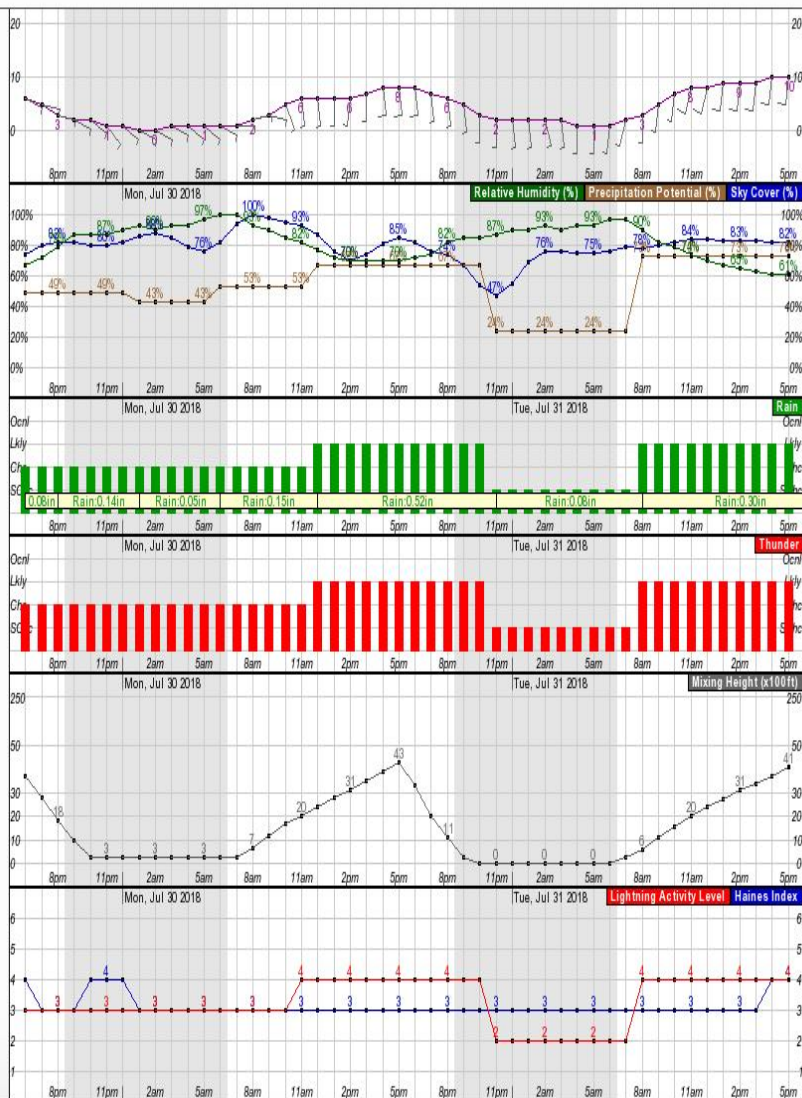
Fire Weather Planning Forecast For North Carolina
National Weather Service Raleigh NC
353 PM EDT Sun Jul 29 2018

.DISCUSSION...
A stalled surface front across central North Carolina coupled with a moisture rich air mass will cause unsettled weather conditions across the region through Wednesday.

NCZ074-300900-
Montgomery-
Including the cities of Troy, Biscoe, Mount Gilead, Pekin, Badin Lake, and Eldorado
353 PM EDT Sun Jul 29 2018

	Tonight	Mon	Mon Night	Tue
Cloud Cover	MCl dy	MCl dy	MCl dy	MCl dy
Precip Type	Tstms	Tstms	Tstms	Tstms
Chance Precip (%)	50	70	70	70
Temp (24h trend)	70 (-2)	85 (-3)	72	86
RH % (24h trend)	100 (+7)	64 (+7)	98	62
20ft Wnd-Val/AM(mph)		Lgt/Var		Lgt/Var
20ft Wnd-Rdg/PM(mph)	Lgt/Var	S 4-8	Lgt/Var	S 5-9
Precip Amount	0.32	0.41	0.29	0.29
Mixing Hgt(ft-agl/msl)	300	4800	0	4200
Transport Wnd (mph)	SE 5	S 8	SE 5	S 22
Vent Rate (mph-ft)	1500	38400	0	92400
Dispersion	Very Poor		Poor	
LAL	3	4	4	5
Haines Index	3	3	3	3
Stability Class	F	D	F	D
ADI early	19 Gen Poor	9 Poor	19 Gen Poor	8 Poor
ADI late	2 Very Poor	17 Gen Poor	2 Very Poor	47 Gen Good



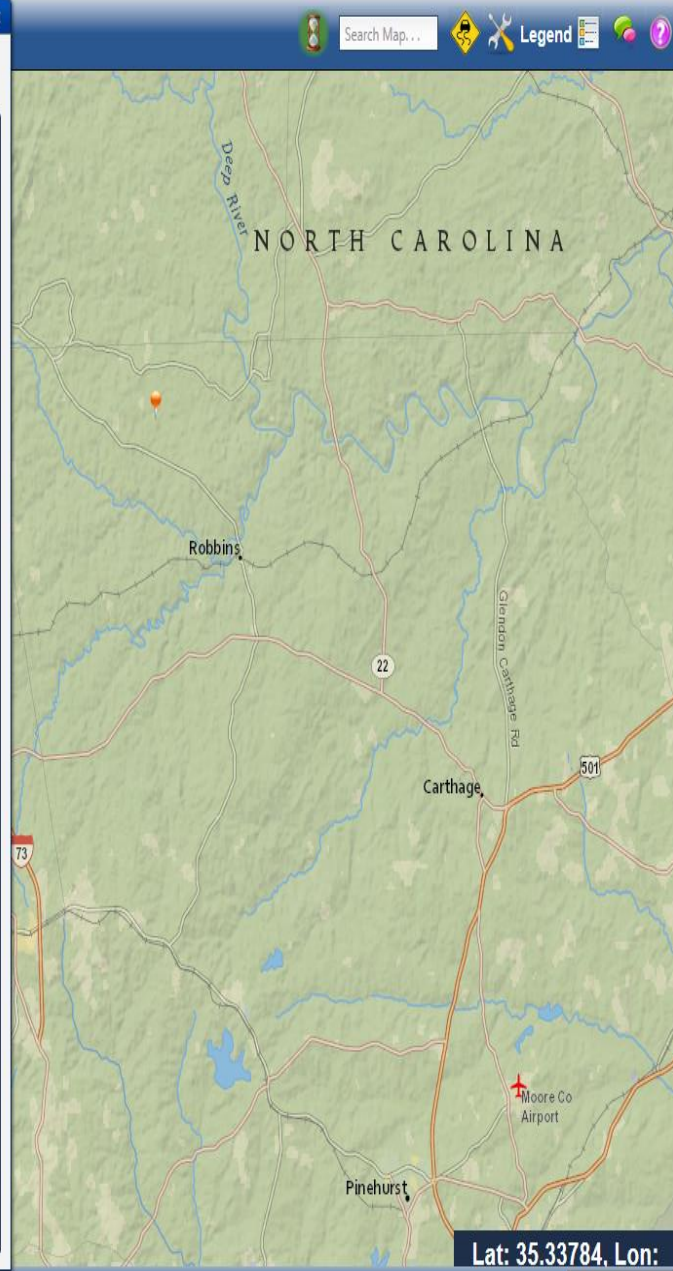


Lat: 35.33784, Lon:

NWS Fire Weather -- Zone Forecast

Fire Zone Forecast Hourly Graph Tabular Request Spot

<input checked="" type="checkbox"/> Relative Humidity (%)		<input type="checkbox"/> Pressure (in)																														
<input checked="" type="checkbox"/> Rain		<input type="checkbox"/> Atmospheric Dispersion Index																														
<input checked="" type="checkbox"/> Thunder		<input type="checkbox"/> Low Visibility Occurrence Risk Index																														
<input type="checkbox"/> Fog		<input type="checkbox"/> Turner Stability Index																														
48-Hour Period Starting: 6pm Sun, Jul 29 2018		Submit																														
		Back 2 Days Forward 2 Days																														
Date	07/29																07/30															
Hour (EDT)	18	19	20	21	22	23	00	01	02	03	04	05	06	07	08	09	10	11	12	13	14	15	16	17								
Temperature (°F)	84	82	80	77	76	75	74	73	73	72	72	71	71	71	73	75	77	79	81	82	83	83	83	83								
Dewpoint (°F)	72	72	73	73	72	71	71	71	70	70	70	70	71	71	71	72	72	73	73	72	72	72	72	72								
Heat Index (°F)	90	87	84	77	76	75										75	77	79	86	87	88	88	88	88								
Surface Wind (mph)	6	5	3	2	2	1	1	0	0	1	1	1	1	1	2	3	5	6	6	6	6	7	8	8								
Wind Dir	E	E	E	E	SE	SE	SE	E	E	E	SE	SE	E	E	E	E	SE	S	S	S	S	S	S	S								
Gust																																
Sky Cover (%)	74	80	82	82	80	80	82	86	88	85	79	76	82	94	100	98	95	93	87	76	70	74	81	85								
Precipitation Potential (%)	49	49	49	49	49	49	49	43	43	43	43	43	53	53	53	53	53	53	53	67	67	67	67	67								
Relative Humidity (%)	67	72	79	87	87	87	90	93	90	93	93	97	100	100	93	90	85	82	77	72	70	70	70	70								
Rain	Chc	Chc	Chc	Chc	Chc	Chc	Chc	Chc	Chc	Chc	Chc	Chc	Chc	Chc	Chc	Chc	Chc	Chc	Chc	Lkly	Lkly	Lkly	Lkly	Lkly								
Thunder	Chc	Chc	Chc	Chc	Chc	Chc	Chc	Chc	Chc	Chc	Chc	Chc	Chc	Chc	Chc	Chc	Chc	Chc	Chc	Lkly	Lkly	Lkly	Lkly	Lkly								
Mixing Height (x100ft)	37	28	18	10	3	3	3	3	3	3	3	3	3	3	7	12	17	20	24	28	31	35	39	43								
Haines Index	4	3	3	3	4	4	4	3	3	3	3	3	3	3	3	3	3	3	3	3	3	3	3	3								
Lightning Activity Level	3	3	3	3	3	3	3	3	3	3	3	3	3	3	3	3	3	3	3	4	4	4	4	4								
Date	07/31																															
Hour (EDT)	18	19	20	21	22	23	00	01	02	03	04	05	06	07	08	09	10	11	12	13	14	15	16	17								
Temperature (°F)	82	81	79	77	76	75	74	74	73	73	72	72	72	72	74	77	79	81	83	84	85	86	86	86								



Spot Forecast Request

NOTICE - This interface is intended to be used solely for the relay of forecast information to the National Weather Service. Submissions sent through this online form are intended for internal agency use. We are required (by e-Gov Act of 2002) to explicitly state that submission of any information is voluntary. For further information please read our Privacy Policy and Disclaimer. False statements on this form may be subject to prosecution under the False Statement Accountability Act of 1996 (18 U.S.C. § 1001) or other statutes.

[Request Page](#)[National Weather Service Spot Program Links](#)[Monitor Page](#)

Step 1: Establish incident location using A or B below.

A. Set request location using nearest street address.

Note 1: Valid entries are street address, zip code, city, state, or latitude & longitude.

Note 2: Latitude & Longitude will return the nearest street address. For exact latitude and longitude points use Step B entry below.

Note 3: City, State, and Zip Code will return a geographic centers.

- OR -

B. Set request location using latitude & longitude, USNG, or drag the map pointer to spot location below.

Note 1: If the map below does not appear you may enter your decimal Lat/Lon below.

Note 2: To start over click the Reload button on your Web Browser.

Note 3: Latitude, Longitude information should be entered in WGS84/NAD83 coordinates in order to ensure accurate forecast locations.

Decimal Degree Latitude, Longitude

West Longitudes Are Negative

Example: 25.6319 -80.2025

United States National Grid (USNG)

Valid for points between 84N and 80S Latitude

Require 13 character grid - 10 meter precision

Example: 18SUJ23480647

Degree, Minute, Seconds

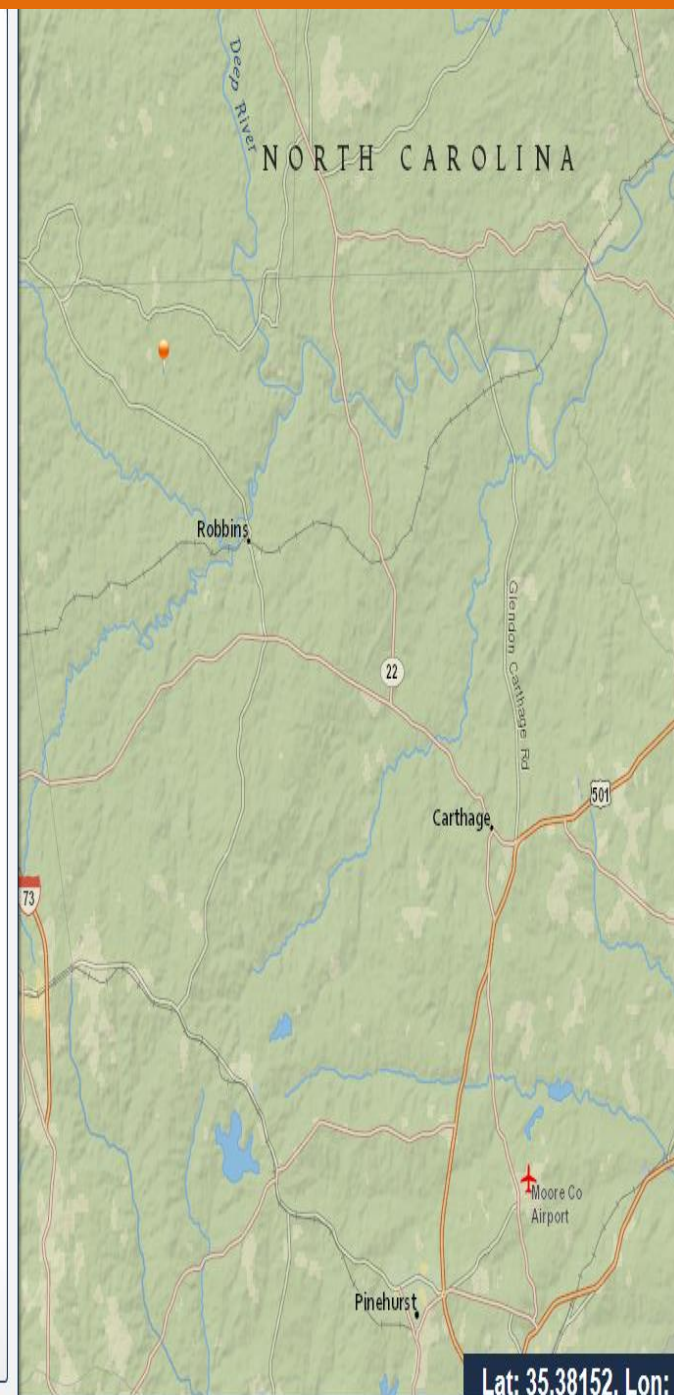
Can accept decimal minutes as an input

Example: 25 deg 19 min 23 sec W

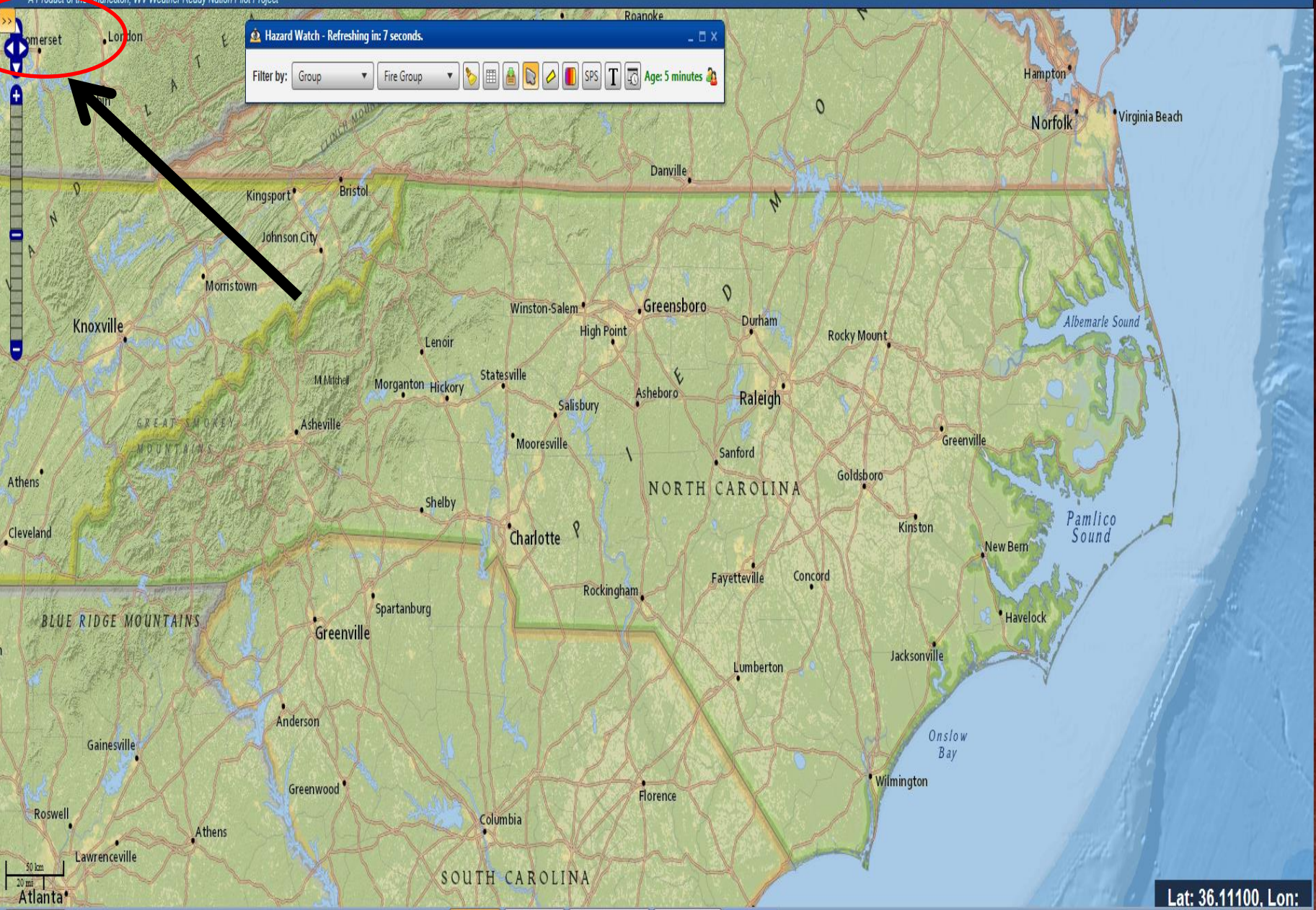
Elevation

Latitude & Longitude value used to determine elevation.

If elevation data is in error, changes can be made on the second page of this spot request.

 FT

Lat: 35.38152, Lon:



Hazard Watch - Refreshing in: 7 seconds.

Filter by: Group Fire Group

Age: 5 minutes

Lat: 36.1100, Lon:

Experimental

Interface: Fire

Quick Layers

- Radar: ☐
- Satellite: ☐
- Hazards: ☐
- Tropical: ☐
- Rivers: ☐
- Forecast: ☐
- Observations: ☐
- Model Spread: ☐
- Webcams: ☐
- Outlooks: ☐
- Background: ESRI Nat Geo

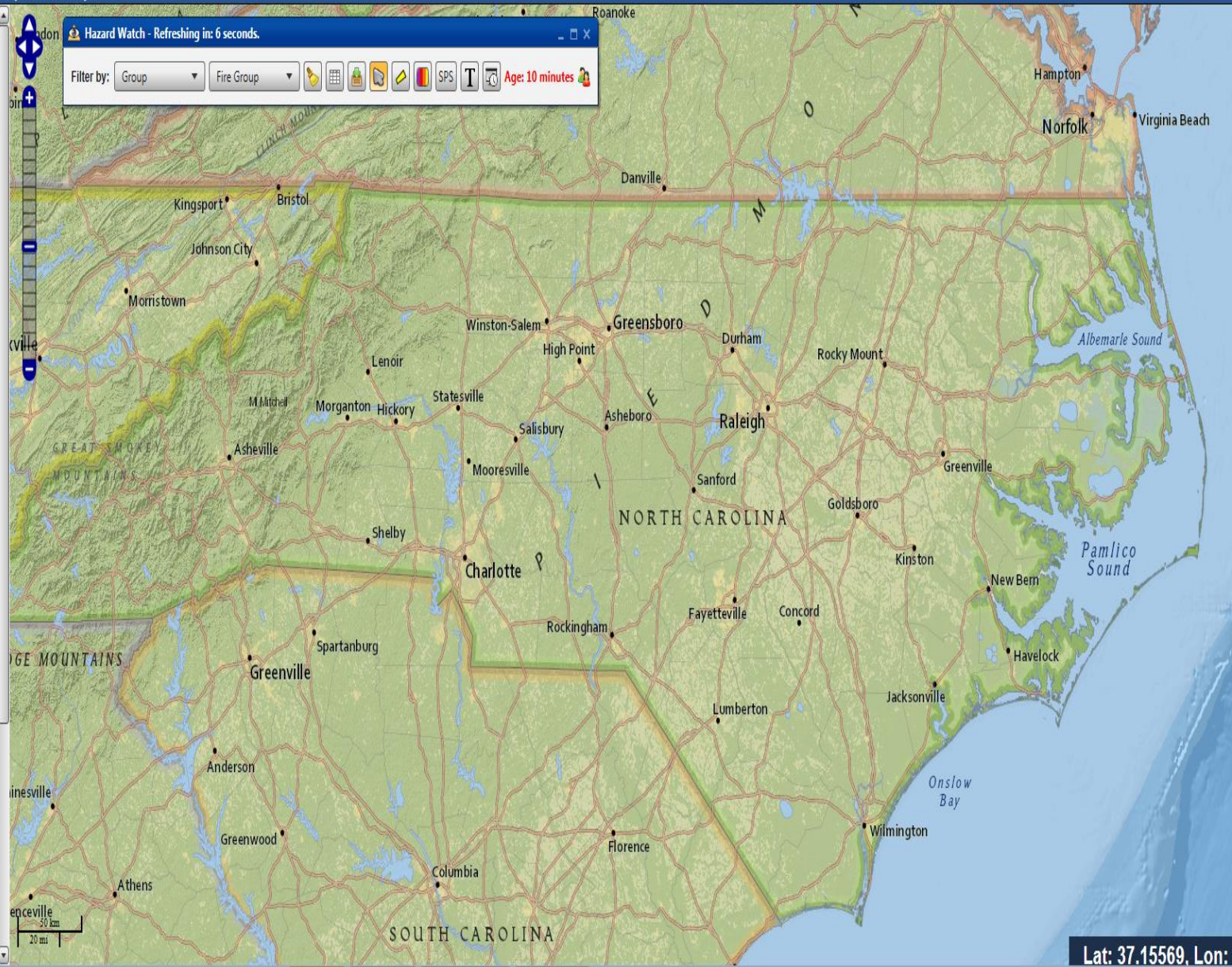
Clear All

Layer Tree

- Opacity:
- fire 0/0
 - Cities
 - Interstates
 - Latitude/Longitude Lines
 - Marine Zones - nowCOAST
 - NWS Locations
 - RFC Boundaries
 - Roads
 - Storms/Hydro Data Map

Hazard Watch - Refreshing in: 6 seconds.

Filter by: Group Fire Group Age: 10 minutes



Lat: 37.15569, Lon:



Search Map...



Legend



Experimental

Interface:

Fire



Quick Layers

Clear All

- Radar: ☐ ☐ ☐
- Satellite: ☐ ☐ ☐
- Hazards: ☐ ☐ ☐
- Tropical: ☐ ☐ ☐
- Rivers: ☐ ☐ ☐
- Forecast: ☐ ☐ ☐
- Observations: ☐ ☐ ☐
- Model Spread: ☐ ☐ ☐
- Webcams: ☐ ☐ ☐
- Outlooks: ☐ ☐ ☐
- Background: ☐ ☐ ☐

More Layers

Layer Tree

Opacity:

fire 64/262

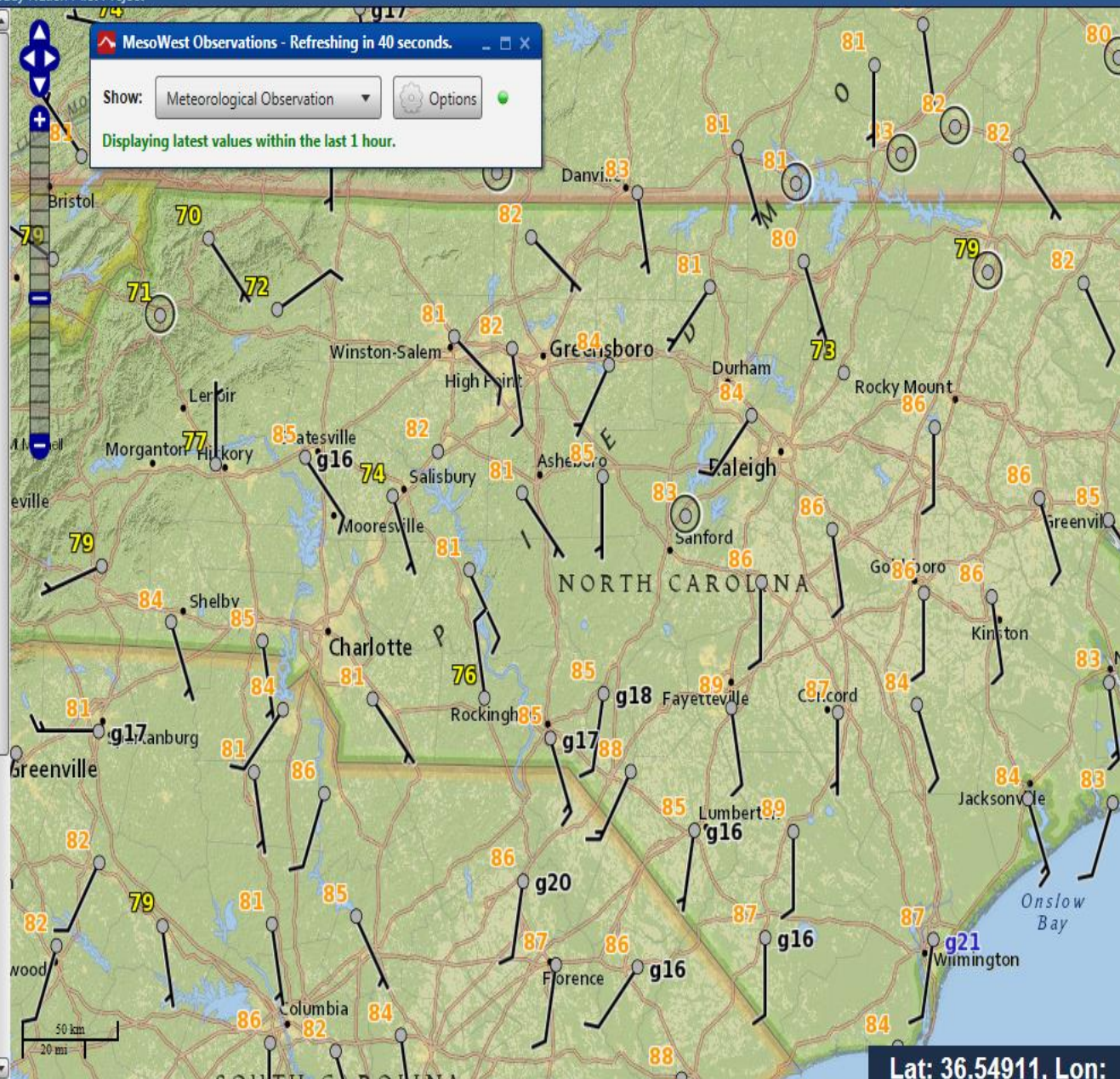
- Layers
- Fire Weather
 - Active Fire Perimeters
 - Complex Points
 - Current Fire

MesoWest Observations - Refreshing in 40 seconds.

Show: Meteorological Observation

Options

Displaying latest values within the last 1 hour.



Lat: 36.54911, Lon:

NWS Chat

Hazard Watch - Refreshing in: 7 seconds.

States

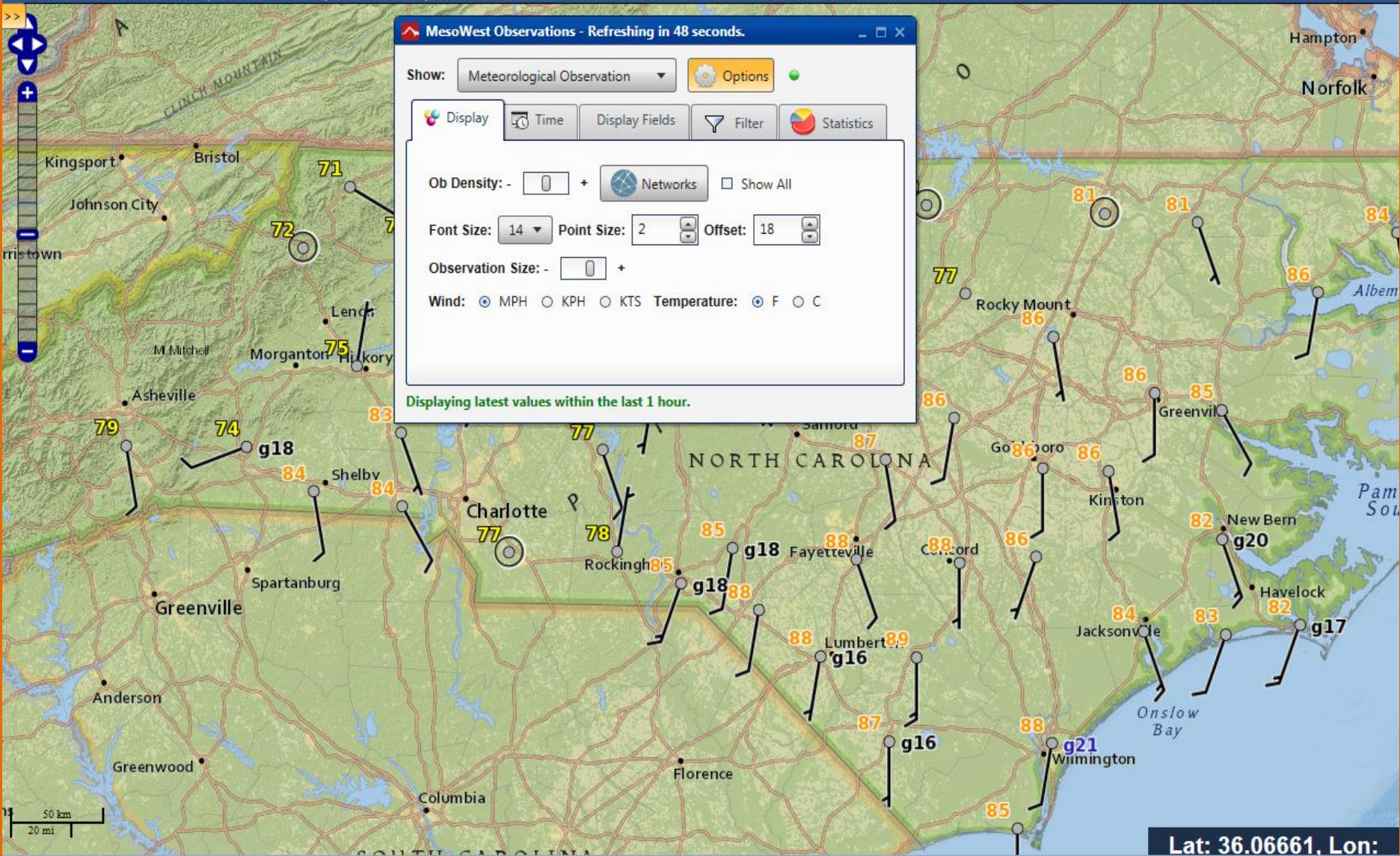
Counties

Storm Reports

Save/Share

Like 3.3K

Privacy/PDD/Credits



MesoWest Observations - Refreshing in 48 seconds.

Show: Meteorological Observation Options

Display Time Display Fields Filter Statistics

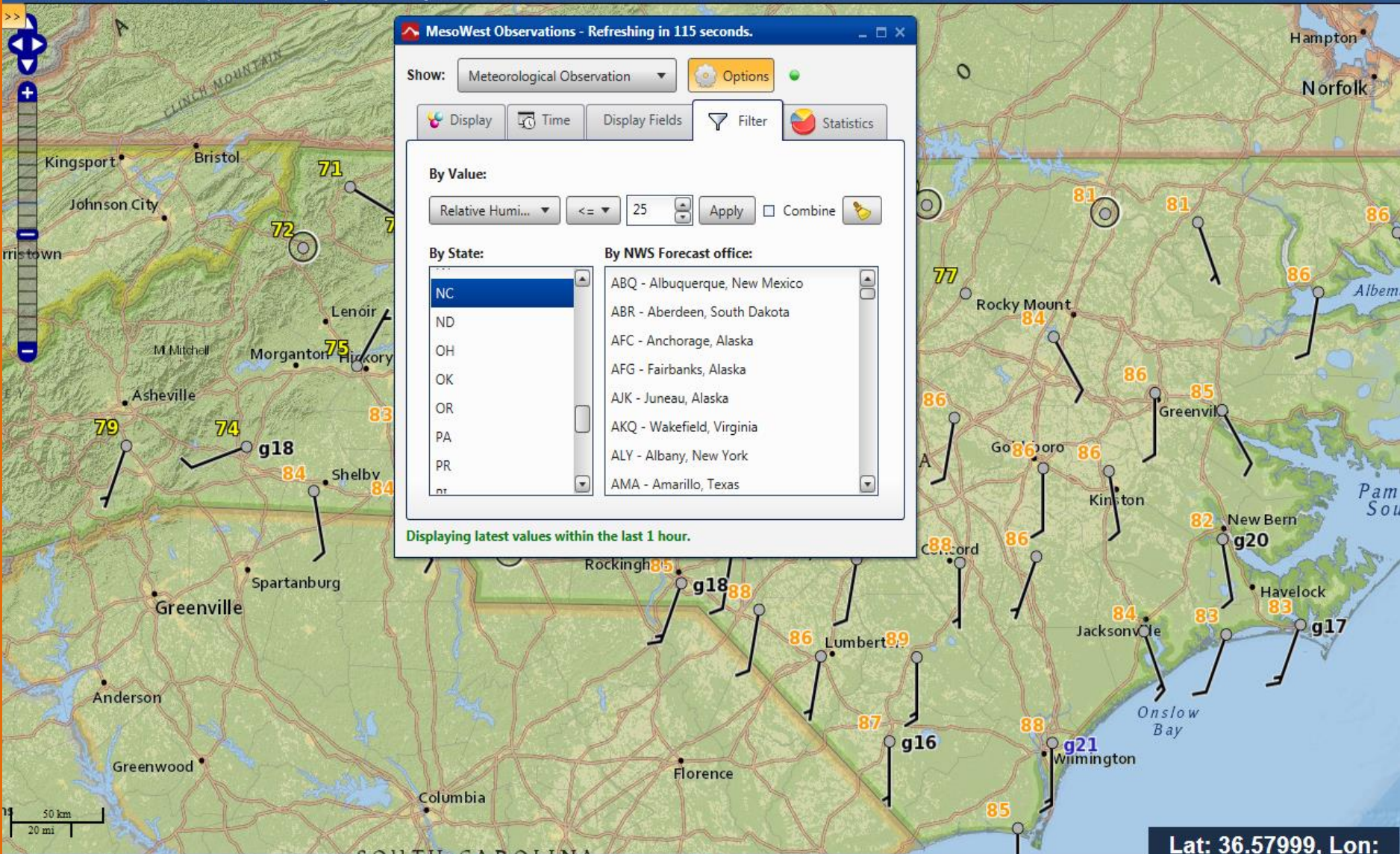
Ob Density: - + Networks ☐ Show All

Font Size: 14 Point Size: 2 Offset: 18

Observation Size: - +

Wind: ☒ MPH ☐ KPH ☐ KTS Temperature: ☒ F ☐ C

Displaying latest values within the last 1 hour.



MesoWest Observations - Refreshing in 115 seconds.

Show: Meteorological Observation Options

Display Time Display Fields Filter Statistics

By Value:
Relative Humi... <= 25 Apply Combine

By State:
NC
ND
OH
OK
OR
PA
PR
nt

By NWS Forecast office:
ABQ - Albuquerque, New Mexico
ABR - Aberdeen, South Dakota
AFC - Anchorage, Alaska
AFG - Fairbanks, Alaska
AJK - Juneau, Alaska
AKQ - Wakefield, Virginia
ALY - Albany, New York
AMA - Amarillo, Texas

Displaying latest values within the last 1 hour.

Experimental

Interface: Fire

Quick Layers




Radar:    



Radar Controls



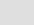
Loop:  - +


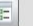
Loop Speed:  - +



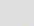
July 30th, 5:48 PM EDT

Satellite:   

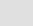
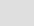
Hazards:   

Tropical:   

Rivers:   

Forecast:   

Observations:   

Model Spread:   

Webcams:   

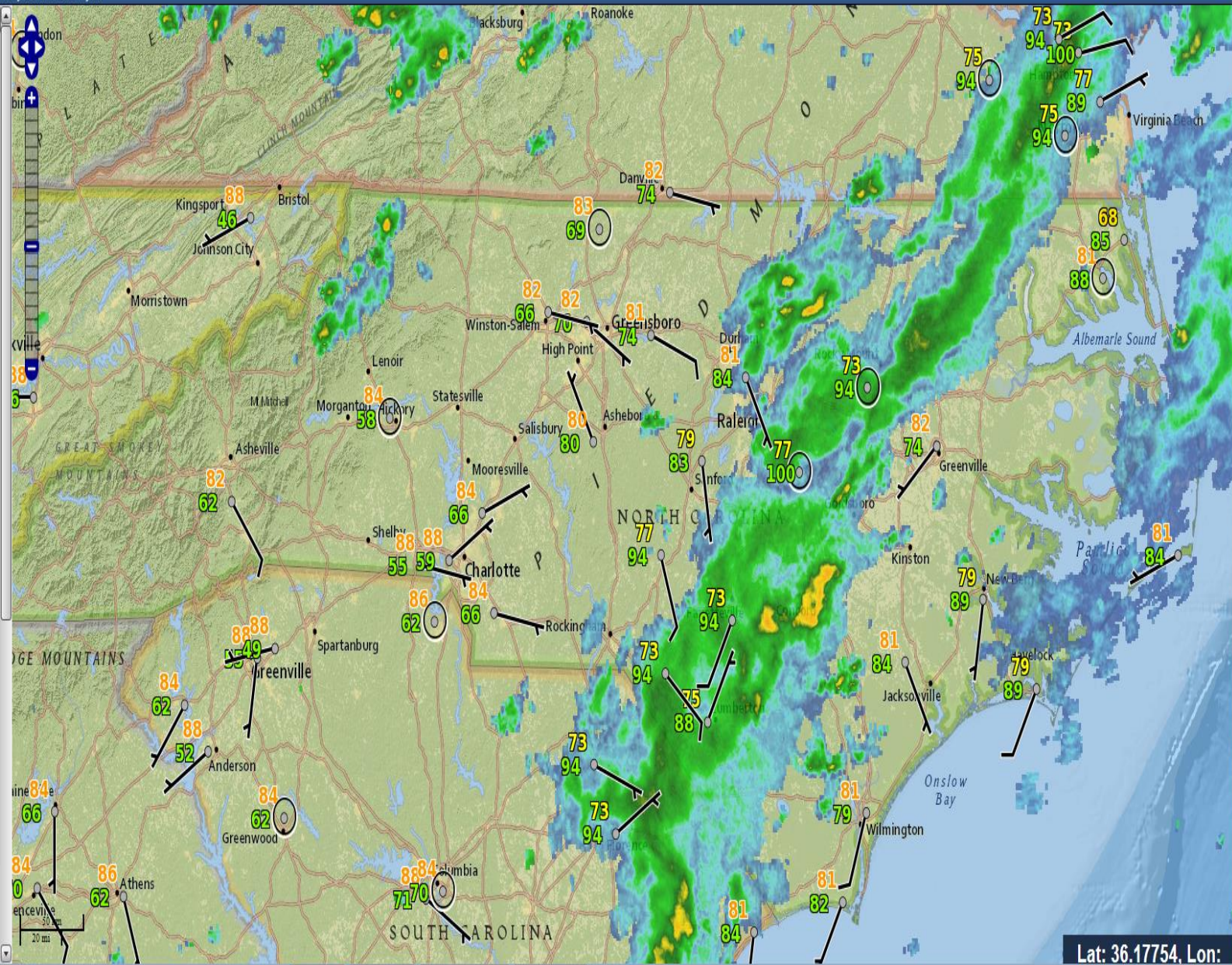
Outlooks:   

Background:   

More Layers

Layer Tree

Opacity: 



Lat: 36.17754, Lon:

Experimental

Interface: Fire

Quick Layers

Radar:

Satellite:

Satellite Controls

Loop: -

Loop Speed:

☐ Include Radar Precipitation Type

Past (hrs): ☐ 6 ☐ 12 ☐ 24 ☐ 36

3:00 PM EDT Tue, Jul 31st, 2018

[Satellite Layer Disclaimer](#)

Hazards:

Tropical:

Rivers:

Forecast:

Observations:

Model Spread:

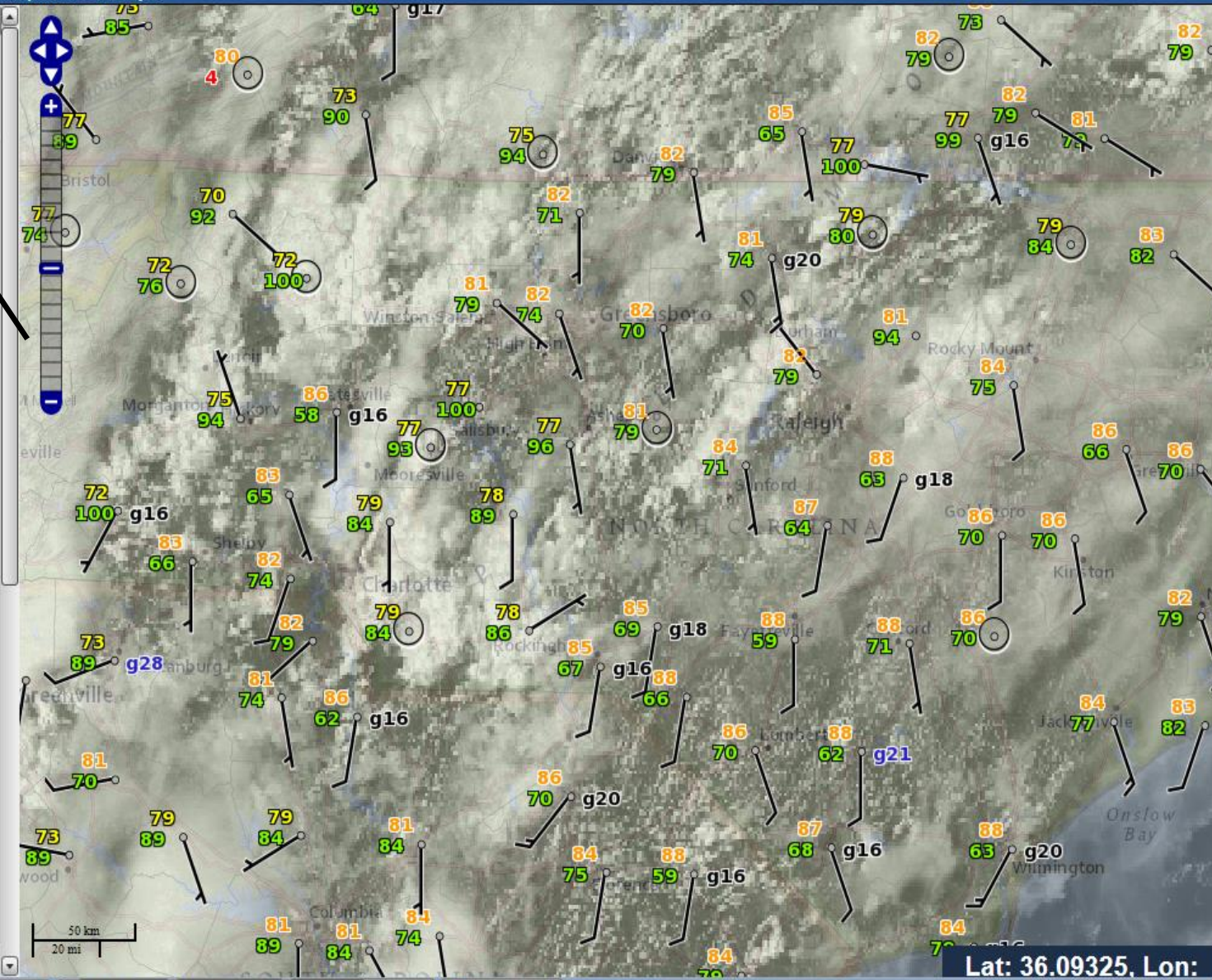
Webcams:

Outlooks:

Background: ESRI Nat Geo

More Layers

Layer Tree



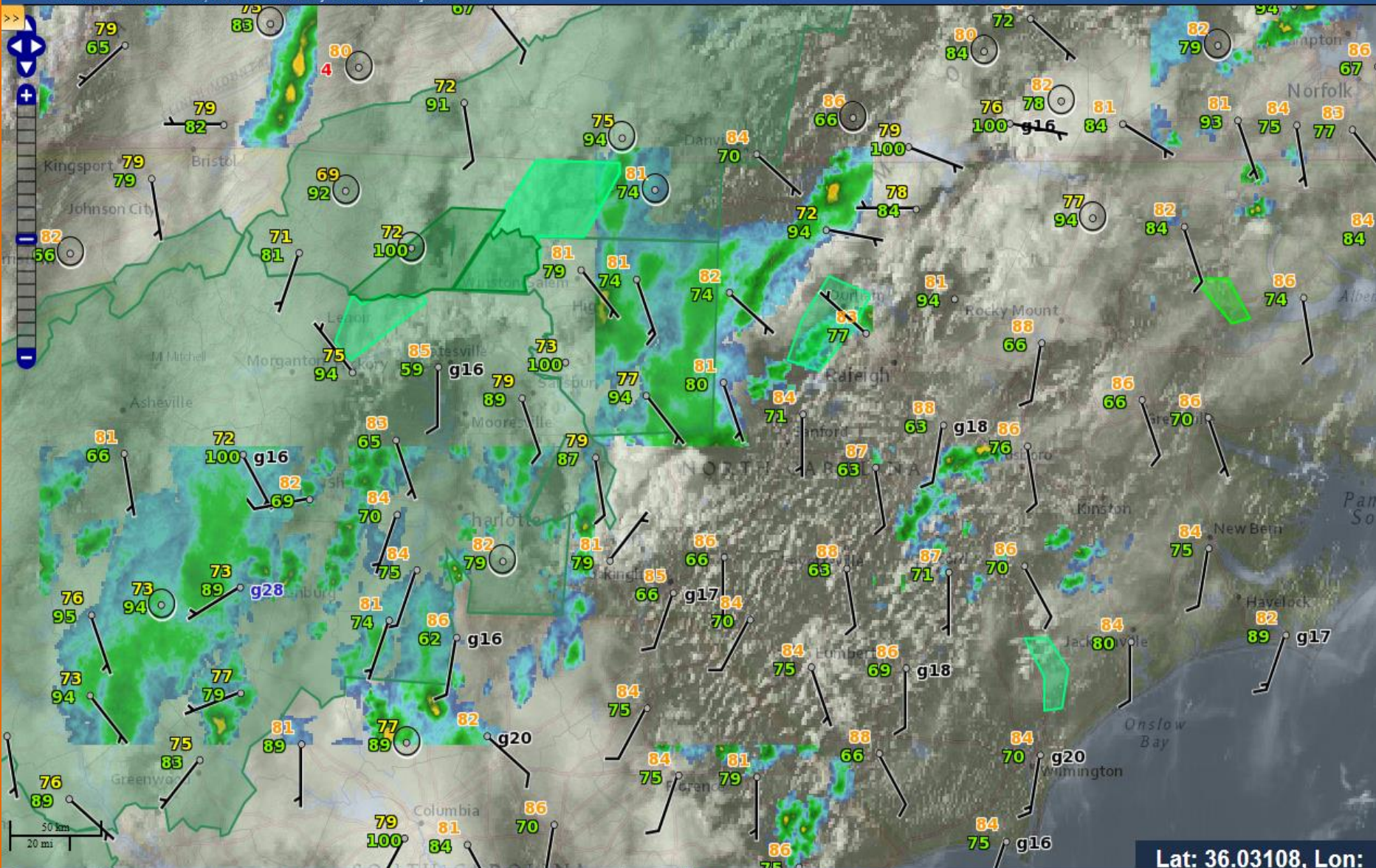
Lat: 36.09325, Lon:



Search Map...



Legend

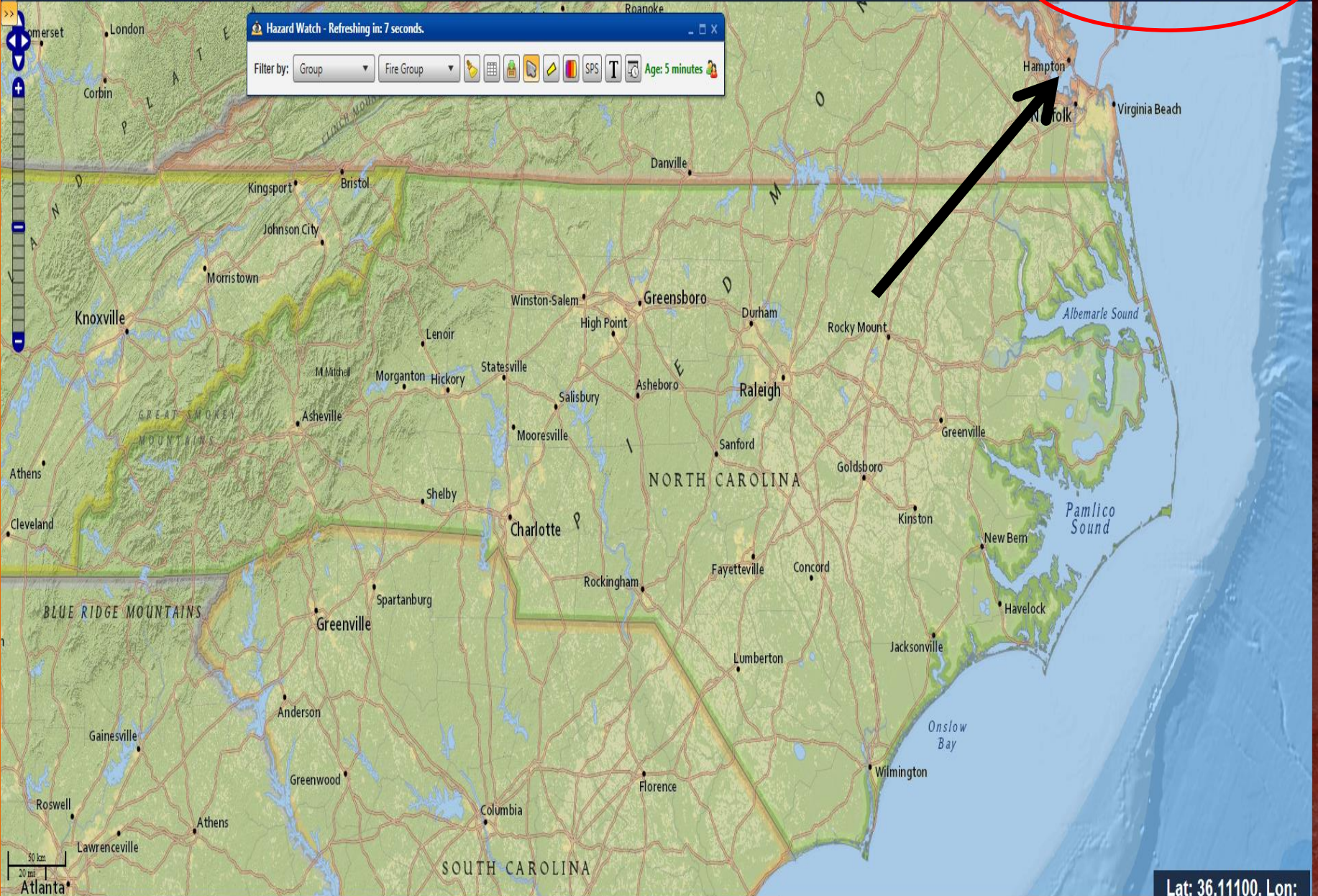


Lat: 36.03108, Lon:

Hazard Watch - Refreshing in: 7 seconds.

Filter by: Group Fire Group

Age: 5 minutes



Lat: 36.11100, Lon:

NWS Enhanced Data Display v4.5.12

A Product of the Charleston, WV Weather Ready Nation Pilot Project

☐ Radar
☐ Satellite
☐ Hazards
☐ Tropical
☐ Rivers
☐ Forecast
☐ Observations
☐ Model Spread
☐ Webcams
☐ Outlooks
☐ Background: ESRI Nat Geo

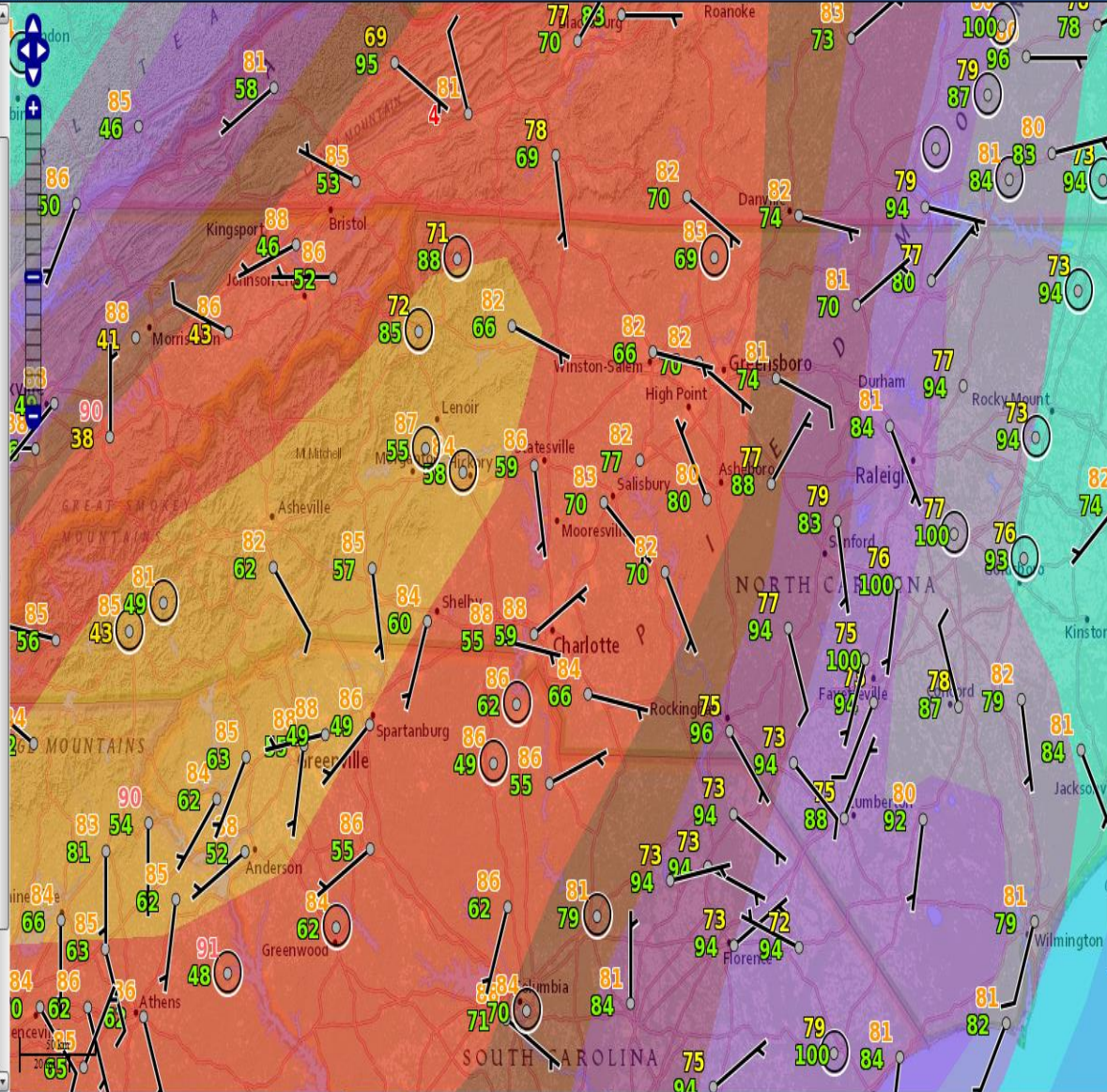
More Layers

Layer Tree

Opacity: 100%

fire 0/0

- Day 1 QPF
- Day 2 QPF
- Day 3 QPF
- Day 1-2 QPF
- Day 1-3 QPF
- Day 1-5 QPF**
- Day 1-7 QPF
- Day 4-5 QPF
- Day 6-7 QPF
- Day 1 Tornado Prob. (SSEC Layer)
- Day 1 Wind Prob. (SSEC Layer)
- Flood Outlook Potential



Legend

max wind gusts >= 40 mph, temperatures <= 20 °F.

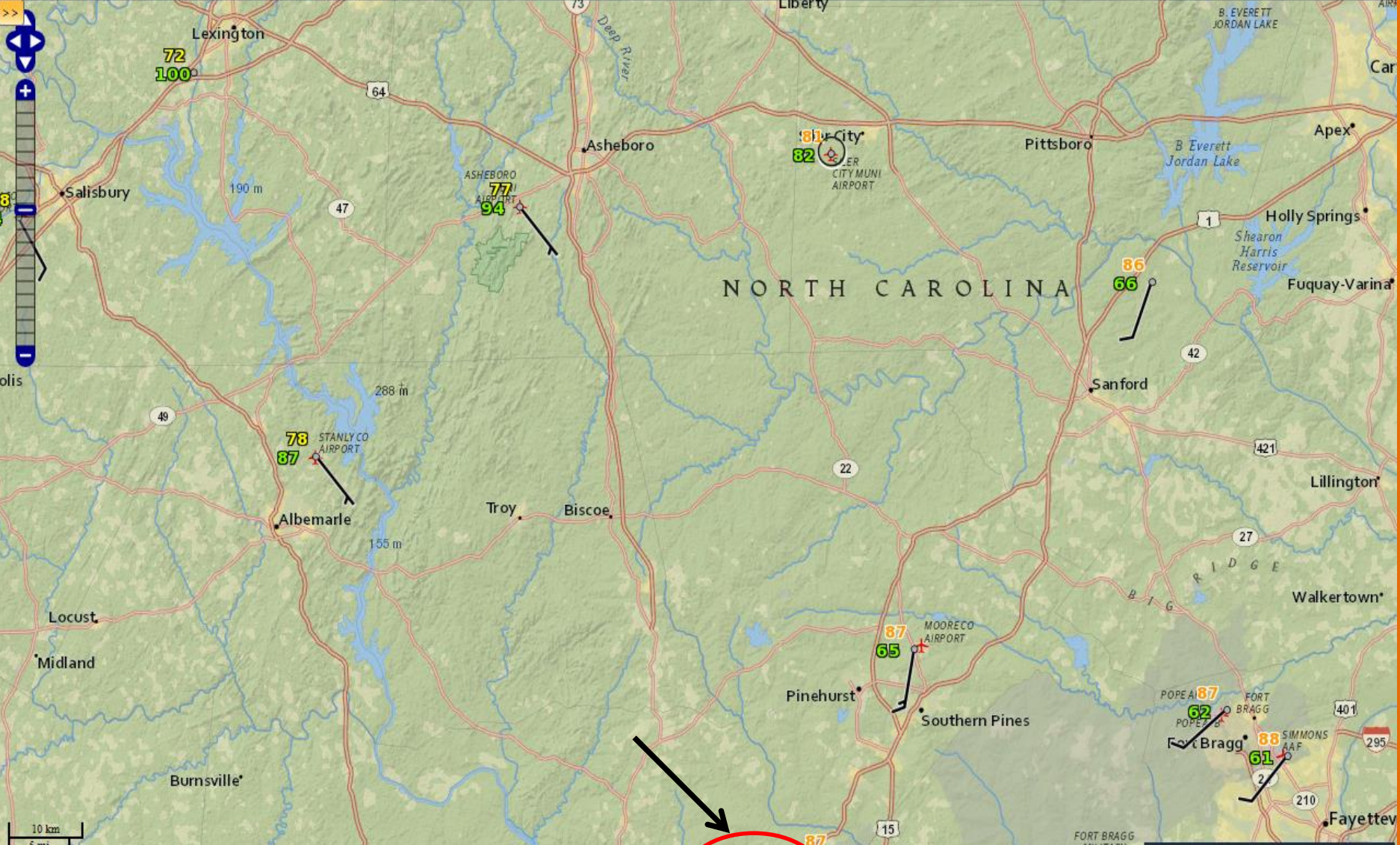
- Sub-Advisory Snow, Sleet, Freezing Rain, or Fog, Max Wind Gusts >= 30 mph.
- Rain or Drizzle or Temperatures <= 32 °F.
- No Forecasted Weather Hazards
- Missing or Invalid Forecast Data

Day 1-5 QPF

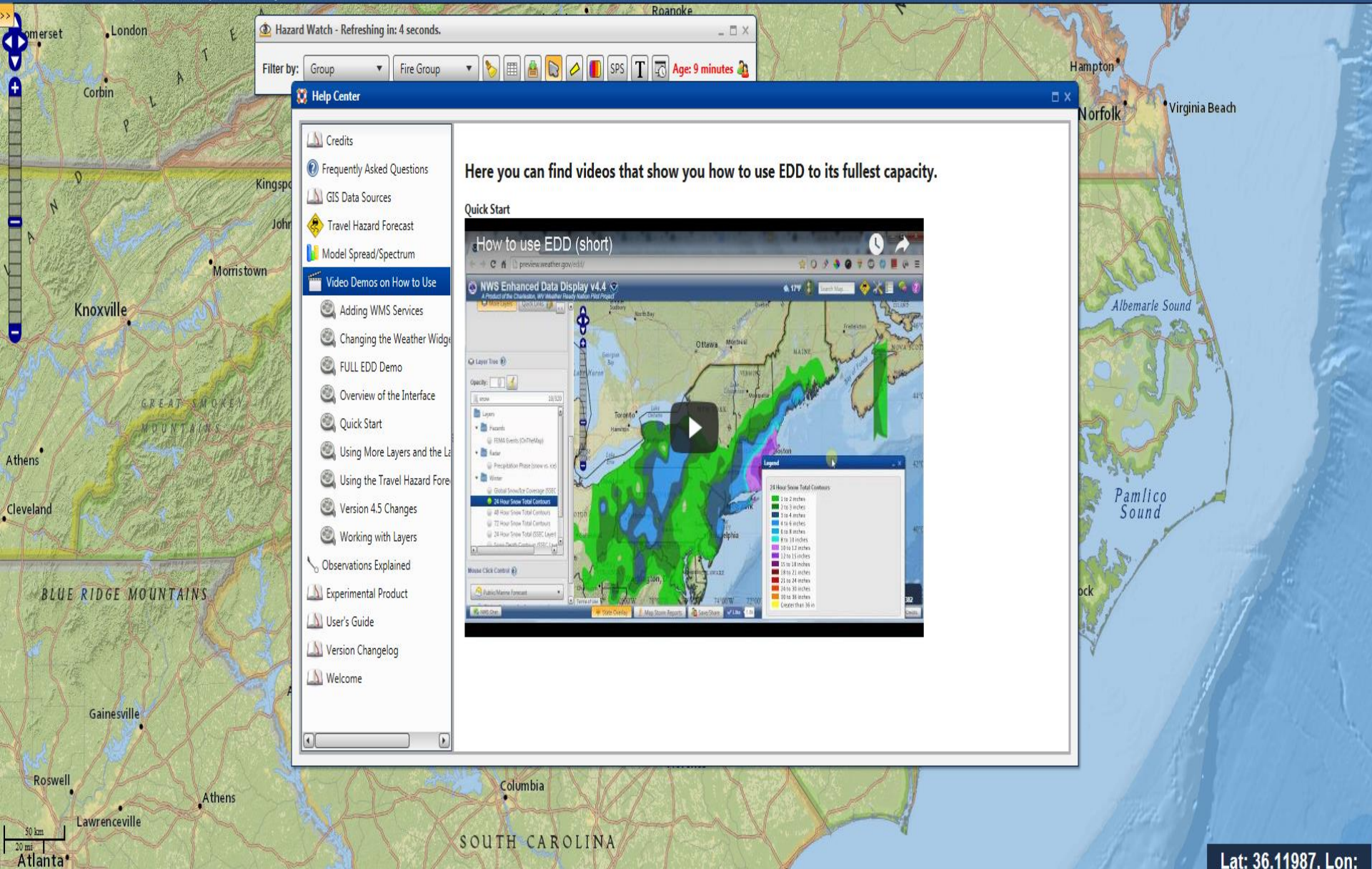
QPF 120 Hour Day 1-5

- 20.00
- 15.00
- 10.00
- 7.00
- 5.00
- 4.00
- 3.00
- 2.50
- 2.00
- 1.75
- 1.50
- 1.25
- 1.00
- 0.75
- 0.50
- 0.25
- 0.10
- 0.01
- 0

Lat: 34.92171, Lon:



Lat: 35.58001, Lon:



Hazard Watch - Refreshing in: 4 seconds.

Filter by: Group Fire Group

Age: 9 minutes

Help Center

- Credits
- Frequently Asked Questions
- GIS Data Sources
- Travel Hazard Forecast
- Model Spread/Spectrum
- Video Demos on How to Use**
 - Adding WMS Services
 - Changing the Weather Widget
 - FULL EDD Demo
 - Overview of the Interface
 - Quick Start
 - Using More Layers and the Layer Tree
 - Using the Travel Hazard Forecast
 - Version 4.5 Changes
 - Working with Layers
- Observations Explained
- Experimental Product
- User's Guide
- Version Changelog
- Welcome

Here you can find videos that show you how to use EDD to its fullest capacity.

Quick Start

How to use EDD (short)

NWS Enhanced Data Display v4.4

Layers: 24 Hour Snow Total Contours

Legend: 24 Hour Snow Total Contours

- 2 to 2 inches
- 2 to 3 inches
- 3 to 4 inches
- 4 to 6 inches
- 6 to 8 inches
- 8 to 10 inches
- 10 to 12 inches
- 12 to 15 inches
- 15 to 18 inches
- 18 to 21 inches
- 21 to 24 inches
- 24 to 30 inches
- 30 to 36 inches
- Greater than 36 in

- Special thanks to Gail Hartfield (NWS Raleigh) for getting this tool available to you, and encouraging its use.
- Special thanks to Corey Davis (NC Climate Office) for the Google documents available to you today.
- Special thanks to Margit Bucher (NC Nature Conservancy) for her critiques and use of the EDD.
- Thank you for your time and attention.