



FIRE MANAGEMENT IN MOUNTAIN STATE PARKS

Past

Present

Future

In the Beginning, Was Wildfire...



Morrow Mountain



Hanging Rock



Stone Mountain



Pilot Mountain







We Knew Fire Was a Player





Stone Mountain – Summit

But we had some issues...



Complexity



Skills



South Mountains – Early 1990's

Crowders Mountain





Hanging Rock

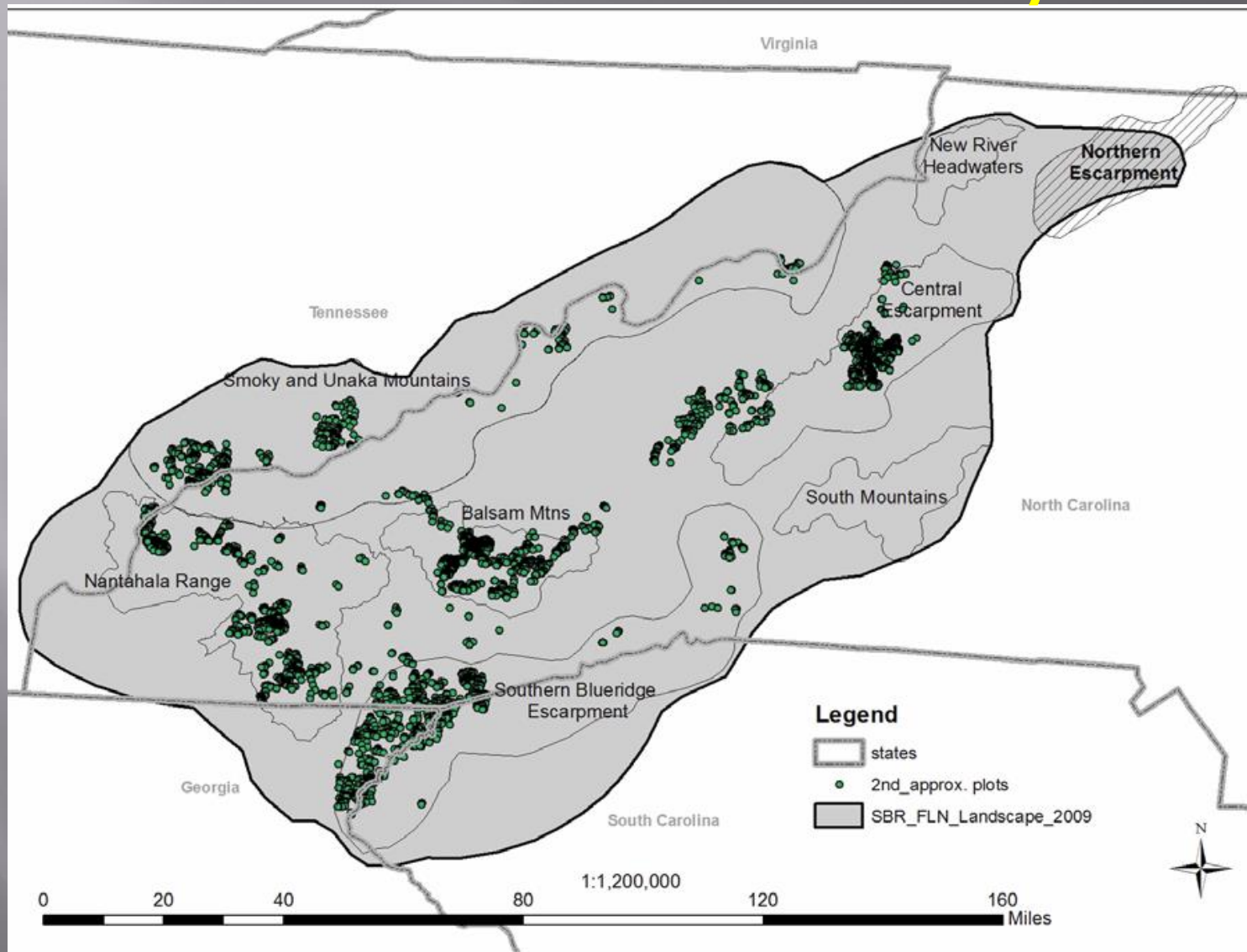
Pilot Mountain





Crowders Mountain – 100 acres 2006, 2012

Where Are We Today?



Southern Blue Ridge Fire Learning Network

Fire Adapted Natural Community Types

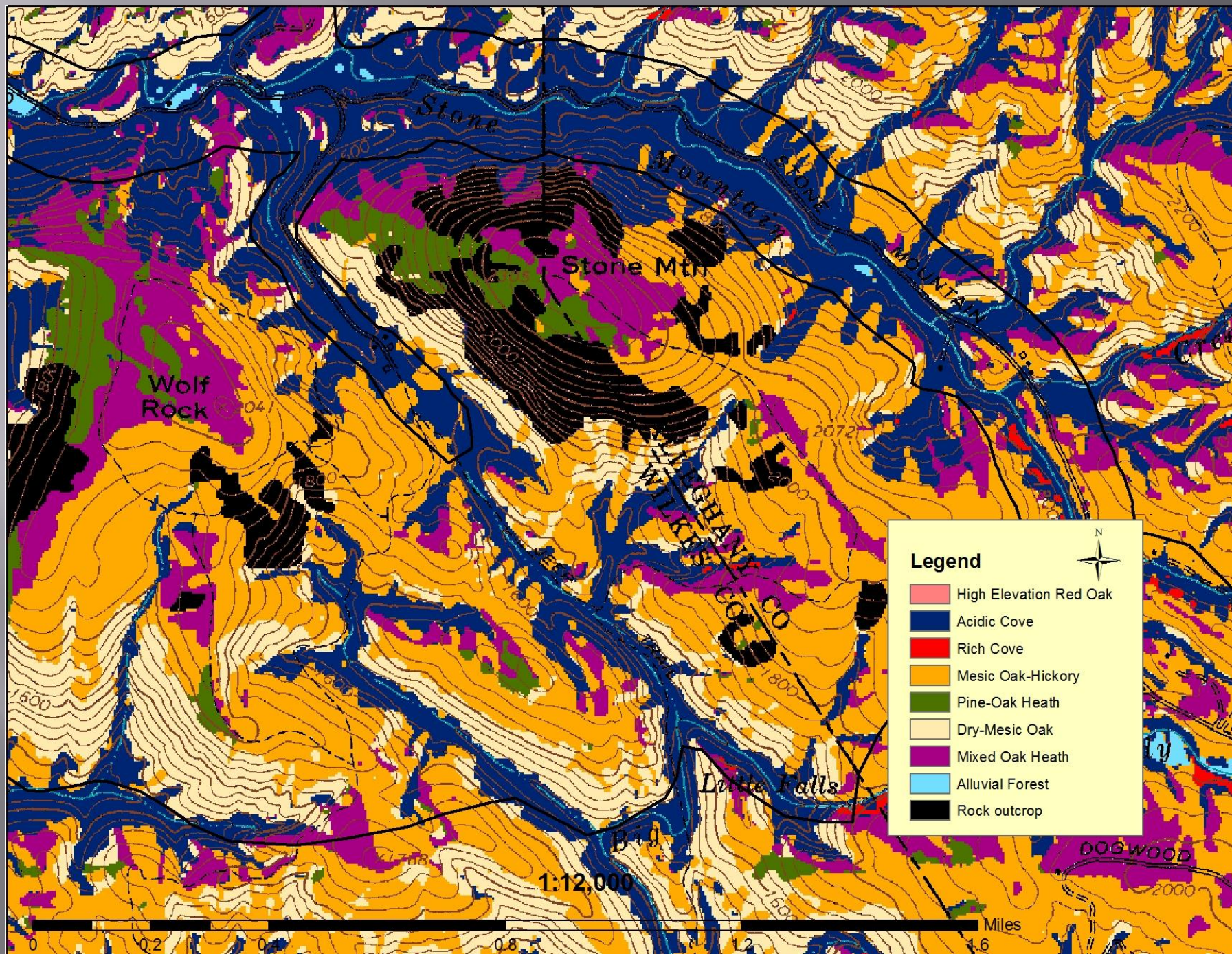


Dry-Mesic Oak Hickory

Pine-Oak Heath

High Elevation Red Oak

Shortleaf Pine-Oak





South Mountains – 2008
500 ac w/WRC



South Mountains – 2012
1,600 ac w/WRC



South Mountains – 2014
1,100 ac w/WRC



Lake James - 2014
200+ ac w/NCFS



Morrow Mountain - 2014
900+ ac in 24 hours w/NCFS



Pilot Mountain – 2013

Pilot Mountain State Park

Escaped Rx Fire – 675 ac

November 2012



Nov. 9 – Wildfire Declared

NCFS Type III Team







Pilot Mountain - 2012

Pilot Mountain - November 2012



Fire History Research and Education





The Action is at Ground Level

THE FUTURE



Pilot Mountain - 2014

60% of FLN Landscape = Fire Adapted Regeneration Failing



Region-wide: ~53,000 ac = fire adapted

Fire Return Interval: ~5 years



Dry-Mesic Oak-Hickory Forests



Pine-Oak Heath



This Is What Most of DPR Fire Looks Like



This Is Not a Winning Hand

The Babies Don't Look Like Their Mommas



Are We Maintaining Landscape Resilience?



Are We Changing Forest Trajectories?

Year Round Fire

Short Return Interval

Mixed Severity

Growing Season Fires

Collaboration

14753

Collaboration



TNC and WRC



AmeriCorps



NCFS

The Way Forward Mixed Severity Fire



Pilot Mountain – December 2012

Pilot Mountain – May 2013



Look Ma – No More Laurel!




Pilot Mountain - 2012

What Happens If We Don't Burn?



Copyright 2013 Matthew M Perry



“By suppressing fires, we’re saving the landscape for the worst conditions. We won’t say that’s our policy, but by our actions, we are selecting for only the most extreme fires. We need to choose good fire over bad fire....”

Mark Finney - U.S. Forest Service

Table Rock ca. 1910