



Greater Uwharrie Conservation Partnership

NC Prescribed Fire Council Annual Meeting 2015



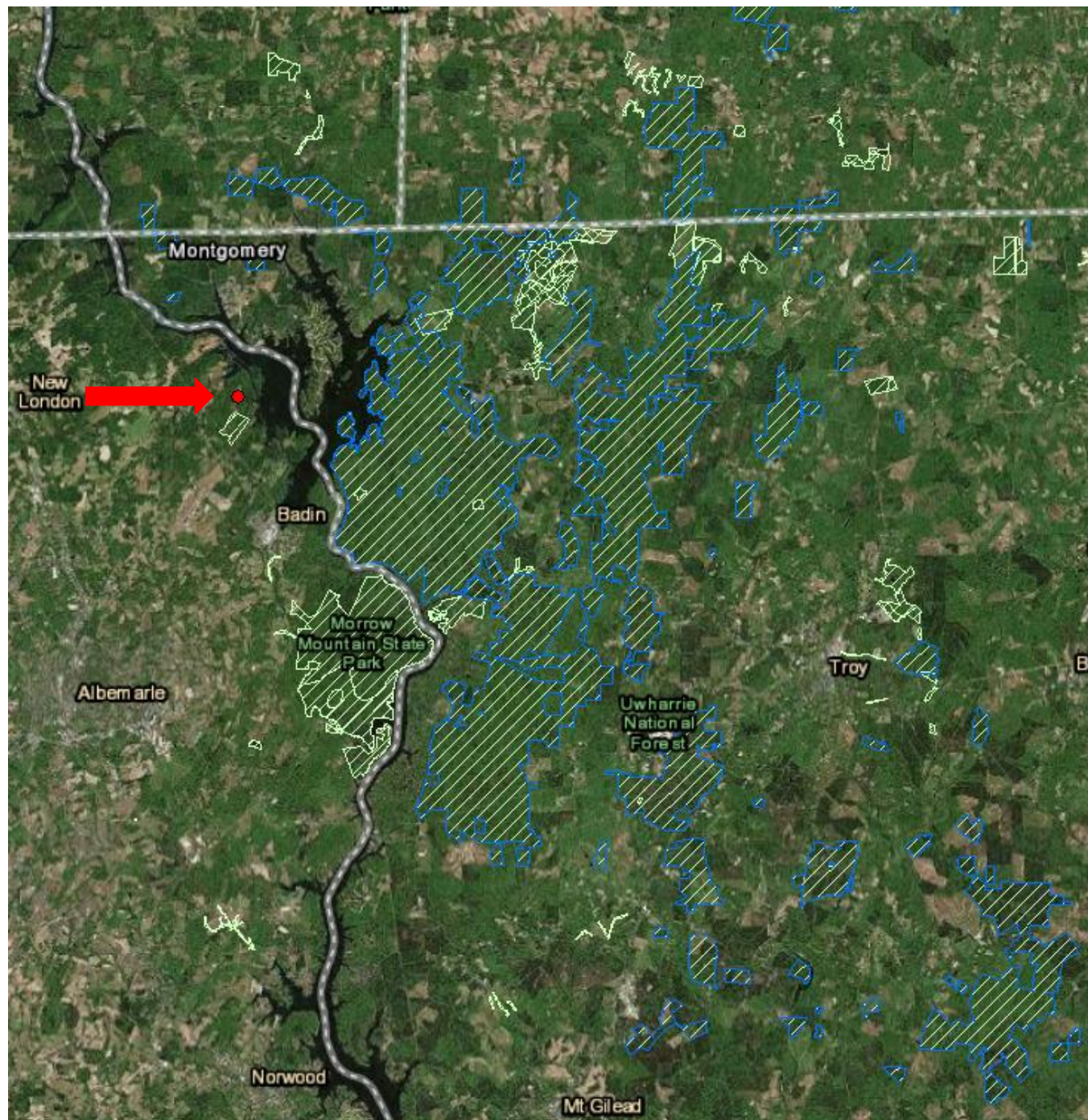
Douglass



Allen

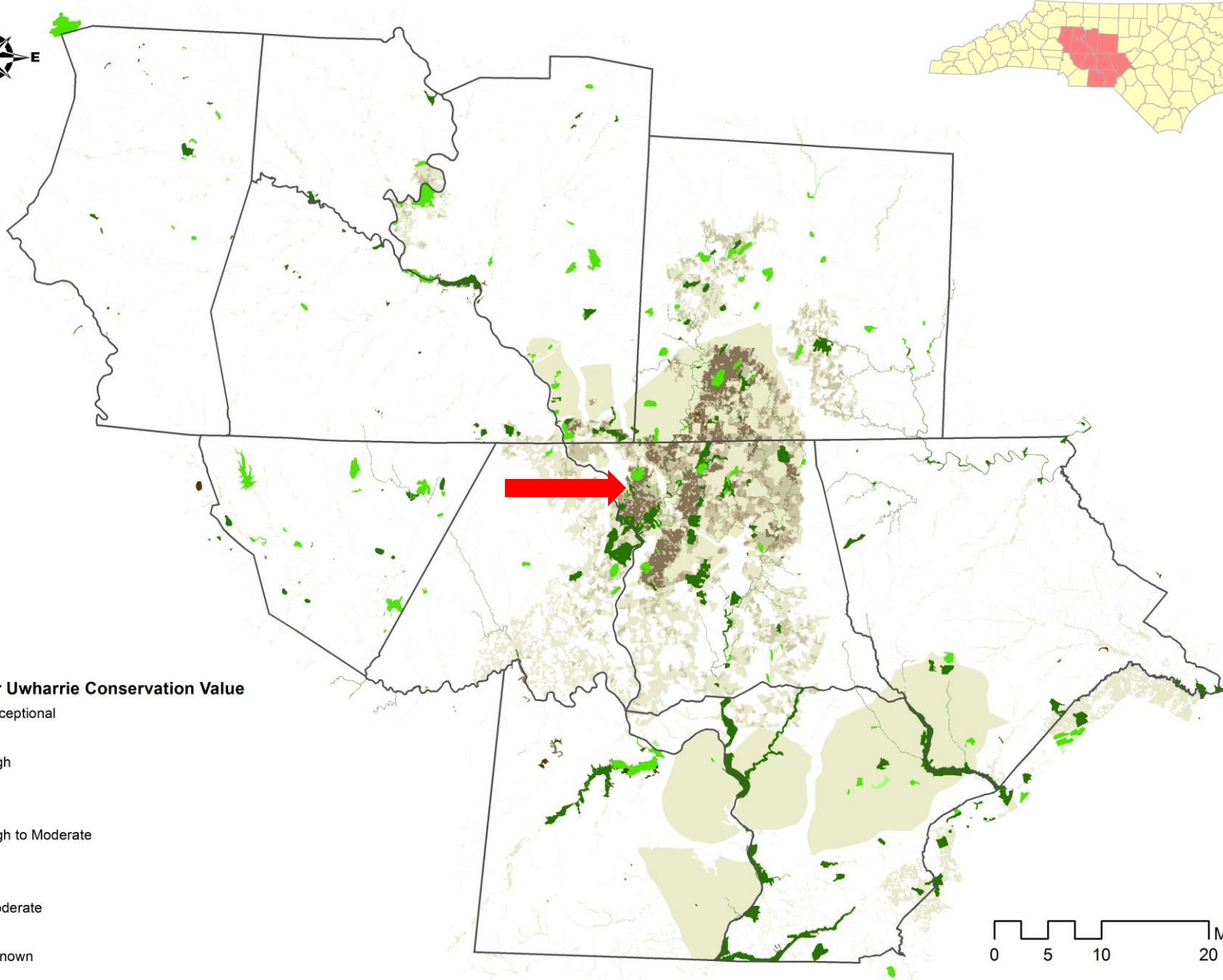
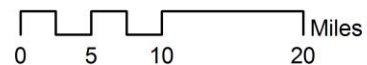
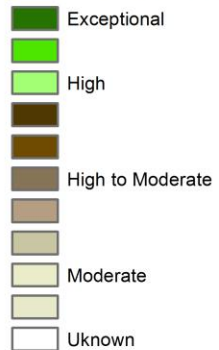


Douglass





Greater Uwharrie Conservation Value



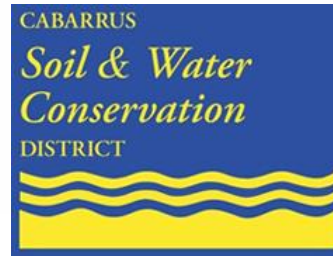


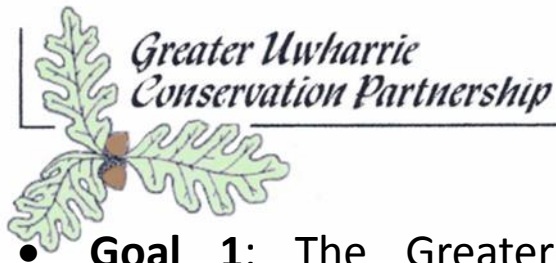
Our Mission Statement

To work for the long-term conservation and enhancement of biological diversity and ecosystem sustainability throughout the Greater Uwharrie Landscape compatible with the land use, conservation and management objectives of the participating organizations and agencies.



Greater Uwharrie Conservation Partnership



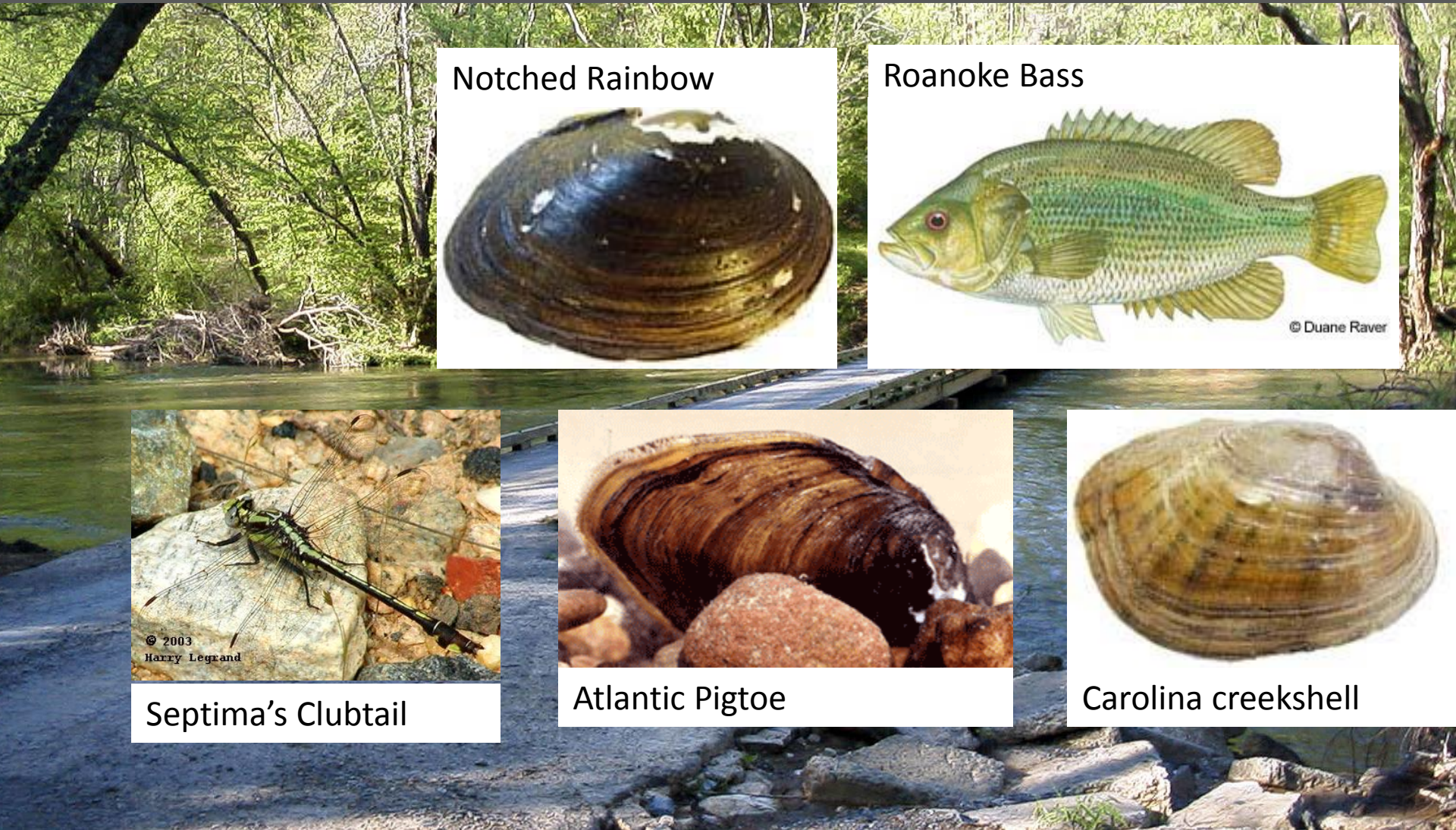


- **Goal 1:** The Greater Uwharrie Conservation Partnership supports efforts to permanently protect lands that conserve biodiversity and water quality.
- **Goal 2:** The Greater Uwharrie Conservation Partnership regularly compiles and updates existing information and fills knowledge gaps on the distribution, status, and conservation and management needs of priority species and habitats in the Uwharries.
- **Goal 3:** The Greater Uwharrie Conservation Partnership promotes adaptive land management practices that benefit priority species and habitats.
- **Goal 4:** The Greater Uwharrie Conservation Partnership uses the best means available to share information and improve coordination among partners.
- **Goal 5:** The Greater Uwharrie Conservation Partnership uses innovative approaches to engage the wider Uwharrie region public in conservation and sustainable development issues.
- **Goal 6:** The Greater Uwharrie Conservation Partnership quantifies economic benefits, whenever possible, in its work to conserve biodiversity and water quality.

Birkhead Wilderness



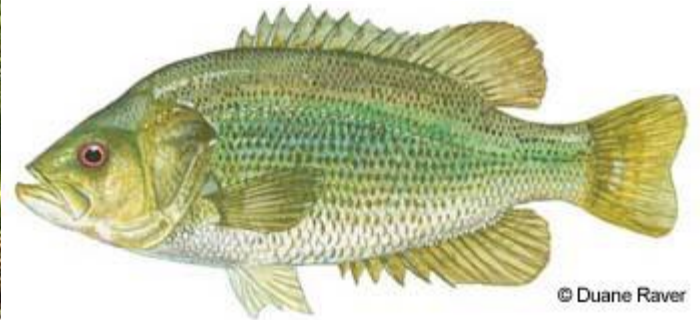
Uwharrie River



Notched Rainbow



Roanoke Bass



Septima's Clubtail



Atlantic Pigtoe



Carolina creekshell

Uwharrie National Forest



Paul Taillie

Pee Dee River



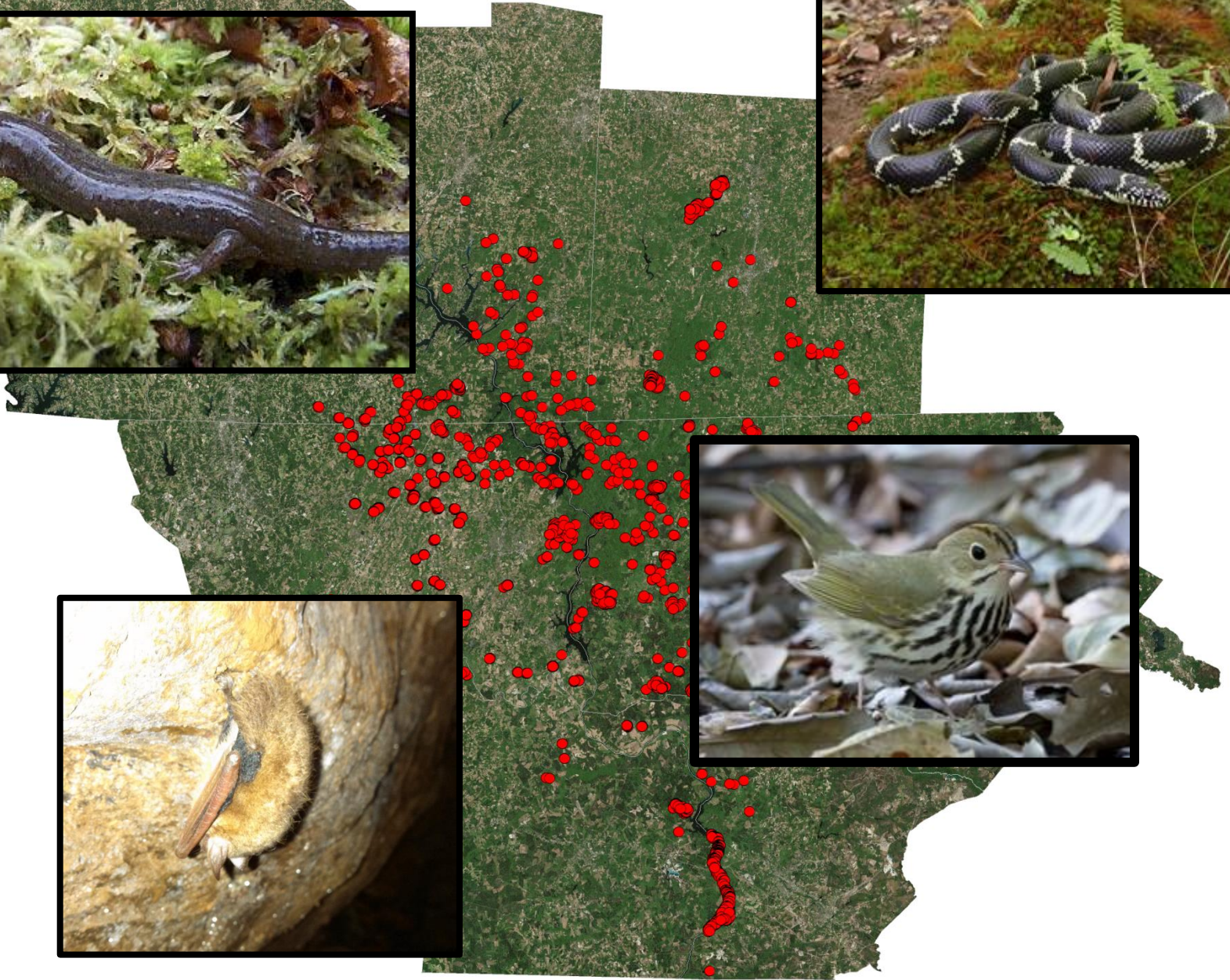




Table 2-2. Desired Fire Return Interval for Ecological Systems of the Uwharrie National Forest

Ecological System	Average Fire Return Interval
Xeric Oak Forest	7-20 years
Dry Oak-Hickory Forest	7-20 years
Dry-mesic Oak-Hickory Forest	7-20 years
Southern Piedmont Mesic Forest	12-20 years
Southeastern Interior Longleaf Pine Woodland	3-5 years
Shortleaf Pine-Oak Woodland	3-5 years
Shortleaf and Loblolly	
On potential Longleaf sites	3-5 years
On potential Oak-Hickory sites	5-7 years
Southern Piedmont Glades and Barrens	5-7 years
Southern Piedmont Mafic Hardpan Woodland	3-5 years
Ridge and Valley Upland Depression Swamp	Ignitions originate outside these areas
Piedmont Seepage Wetlands	Ignitions originate outside these areas
Streamside Forest	12-20 years



From: NCFS TAR

	2008		2009		2010		2011		2012	
	NCFS	Others	NCFS	Others	NCFS	Others	NCFS	Others	NCFS	Others
Anson	0	0	150	0	417	2,865	206	321	527	1,660
Montgomery	1,741	0	1,795	0	773	31	2,135	160	2,988	5,010
Richmond	44	3910	205	250	149	947	1,910	200	1,042	694
Stanly	330	358	624	294	228	0	286	30	1,208	151
Davidson	102	0	66	0	0	64	10	50	783	0
Davie	0	17	94	60	0	0	567	10	60	85
Rowan	22	6	436	0	28	69	1,320	93	810	5
Randolph	60	0	447	80	71	0	0	0	1,223	52
Cabarrus	0	0	0	0	0	0	0	20	0	34
Iredell	0	0	0	0	0	0	325	325	22	12
TOTAL	2299	4291	3817	684	1666	3976	6434	864	8641	7657
TOTAL/year	6590		4501		5642		7298		16298	

Average over 2008-2012: 6722 acres/annually

Nichols Tract

- NC Zoo - Acquired in 2012
- LTCNC, NCFS partners
- 116 acres of old growth longleaf pine

Burns

Every 2 years until fuel load is reduced

- March 2013- NCFS burn
 - Stevens Amendment Funds
- May 2015- NCFS burn
 - NC Zoo Funds



Lindsey Cummings

Denson's Creek

- NCDA&CS Plant Conservation Program
- NCFS, FWS, NRCS partners
- 65 acres: rare plants
- Rescue planting of schweinitz's sunflower



**Denson's Creek Plant
Conservation Preserve
(Montgomery County)
biennially burned since
2007**





R.E. Evans

Black Ankle Bog

- The Nature Conservancy
- 2-3 year burn cycle
- FWS, NC Zoo, NCFS partners
- 284 acres
 - Longleaf pine and bog habitats
 - Rare plants: bog - trumpet and purple pitcher plants



Kelly Douglass



Kelly Douglass



Kelly Douglass



*Greater Uwharrie
Conservation Partnership*

Thank you!

brooke.massa@ncwildlife.org