



# Firewise and Prescribed Fire

**James Rogers**  
**N.C. Forest Service**  
**Fire Prevention and Mitigation**  
**Staff Forester**

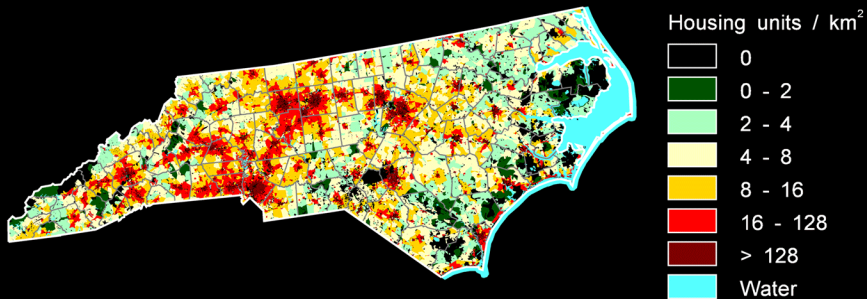


# 30 Years of Housing

## 1980

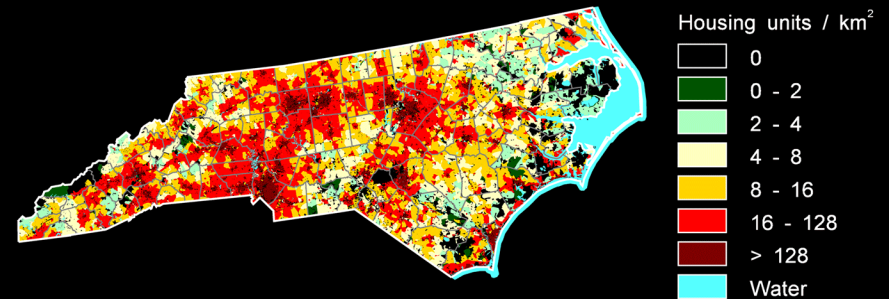
## 2010

North Carolina  
1980 Housing density  
Census partial block groups



Copyright 2007 Roger B. Hammer and Volker C. Radeloff  
Oregon State University and University of Wisconsin - Madison  
rhammer@oregonstate.edu and radeloff@wisc.edu  
With support from the USDA Forest Service Northern Research Station

North Carolina  
2010 Housing density  
Census partial block groups

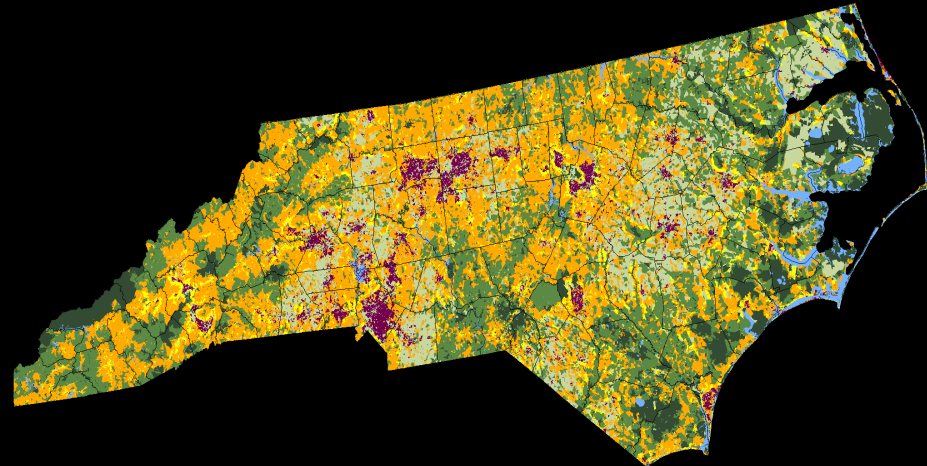


Copyright 2007 Roger B. Hammer and Volker C. Radeloff  
Oregon State University and University of Wisconsin - Madison  
rhammer@oregonstate.edu and radeloff@wisc.edu  
With support from the USDA Forest Service Northern Research Station

# WUI Change

## 1990

## 2000



### North Carolina 1990 Wildland Urban Interface

**WUI**  
Interface  
Intermix

**Non-Vegetated or Agriculture**  
Medium and High Density Housing  
Low and Very Low Housing Density  
Water

**Non-WUI Vegetated**  
No Housing  
Very Low Density Housing

0 7.5 15.2 30.4 Miles

Copyright 2011

Susan I. Stewart  
USDA Forest Service  
Northern Research Station  
sistewart@fs.fed.us

Volker C. Radeloff  
University of Wisconsin-Madison  
radeloff@wisc.edu

WUI version 3 based on the 2000 Census,  
the 1992-2001 NLCD Retrofit Change Product,  
and the Protected Areas Database version 1.1



### North Carolina 2000 Wildland Urban Interface

**WUI**  
Interface  
Intermix

**Non-Vegetated or Agriculture**  
Medium and High Density Housing  
Low and Very Low Housing Density  
Water

**Non-WUI Vegetated**  
No Housing  
Very Low Density Housing

0 7.5 15.2 30.4 Miles

Copyright 2011

Susan I. Stewart  
USDA Forest Service  
Northern Research Station  
sistewart@fs.fed.us

Volker C. Radeloff  
University of Wisconsin-Madison  
radeloff@wisc.edu

WUI version 3 based on the 2000 Census,  
the 1992-2001 NLCD Retrofit Change Product,  
and the Protected Areas Database version 1.1



**North Carolina currently ranks  
**1st** in the U.S.**



**...with the total number of Acres in the  
Wildland Urban Interface.  
(**Over 5,169,000 Acres**)**



**North Carolina also ranks**  
**5th** in the U.S.



**...with the total number of Homes in the**  
**Wildland Urban Interface.**  
**(Over 1.7 Million Homes)**

***Landowners also have a responsibility...***



***Keep your home safe in the interface !!!***



# Firewise Communities/USA Program





**Firewise teaches homeowners, contractors, planners and developers to prepare for a wildfire before it occurs.**

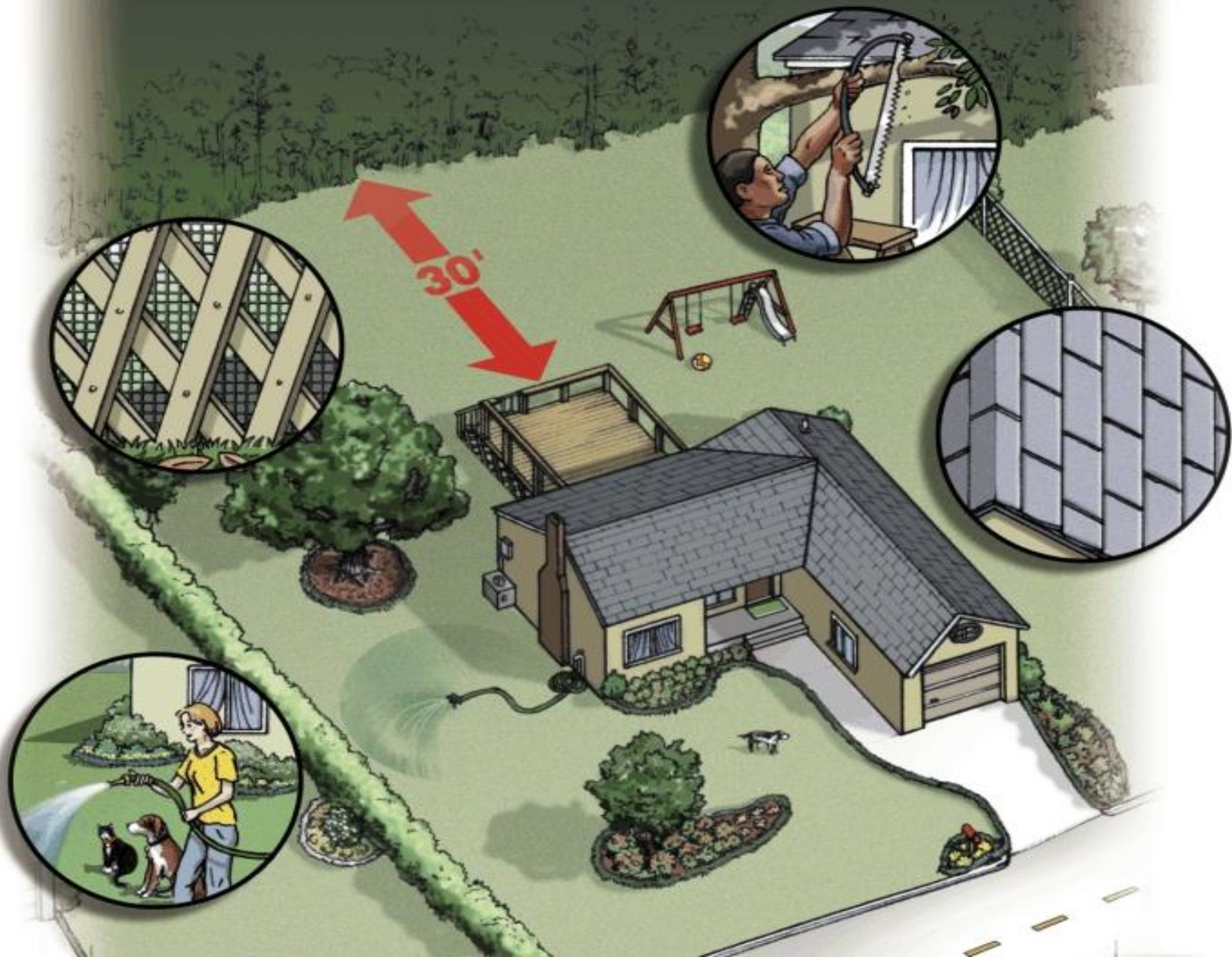
**The community takes charge. They identify and implement local solutions.**





# HIZ – Home Ignition Zone

















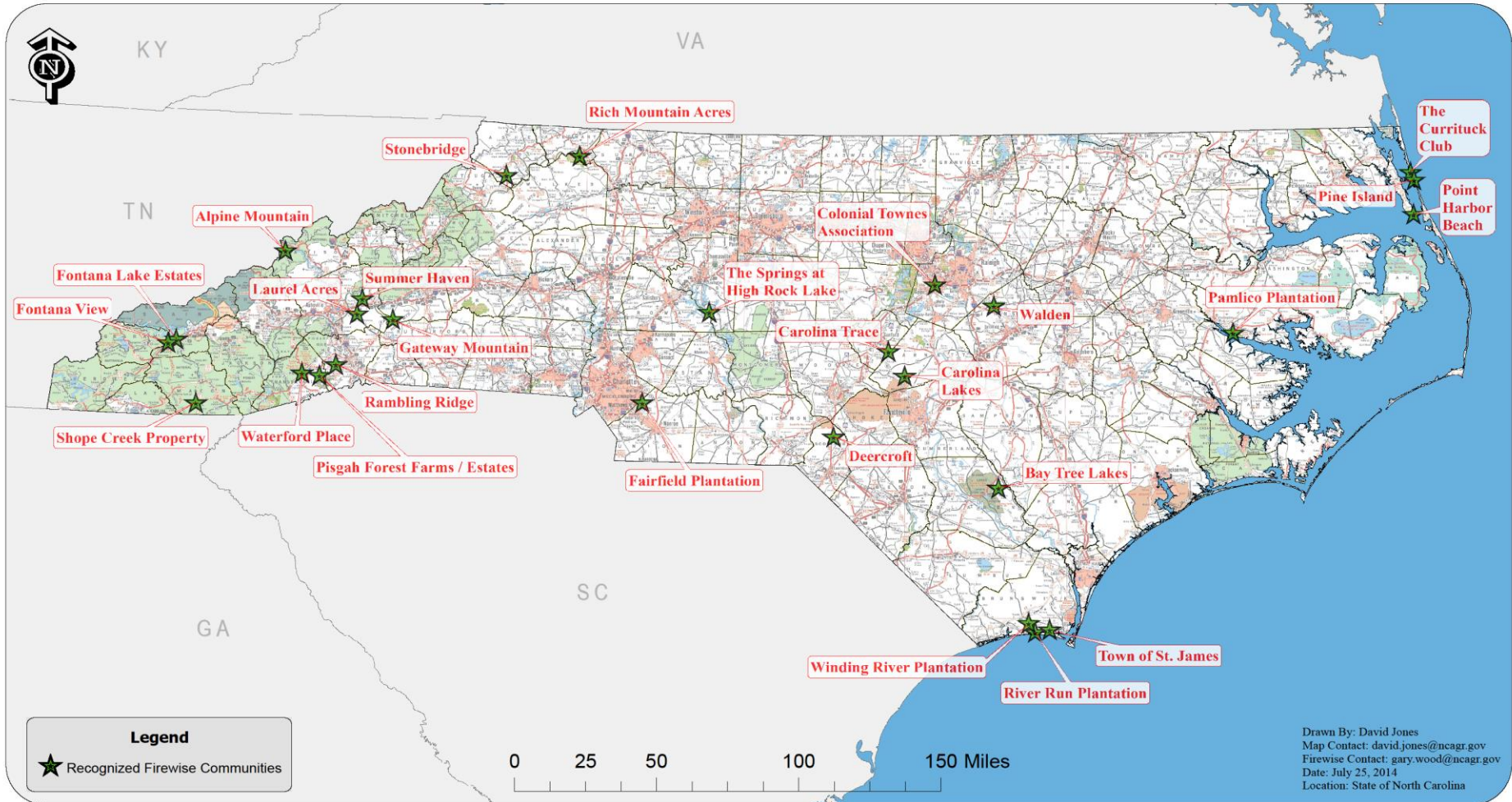








# North Carolina's Firewise Communities / USA Recognized Communities



To learn more about how YOUR community can become a recognized Firewise community,  
contact your local NC Forest Service office  
or visit our web site @ <http://ncforestservice.gov>



## **NC's Firewise Communities USA**

### **27 Recognized Communities**

**River Run Plantation**

**Carolina Lakes**

**Bay Tree Lakes**

**The Currituck Club**

**Deercroft**

**Fontana Lake Estates**

**Point Harbor Beach**

**Springs at High Rock Lake**

**Stonebridge**

**Summer Haven**

**Fairfield Plantation**

**Carolina Trace**

**Laurel Acres**

**Gateway Mountain**

**St. James Plantation**

**Alpine Mountain**

**Rich Mountain Acres**

**Pisgah Forest Farms Estates**

**Shope Creek Community**

**Pamlico Plantation**

**Colonial Townes Association**

**Villages of Ocean Hills**

**Rambling Ridge**

**Pine Island**

**Fontana View**

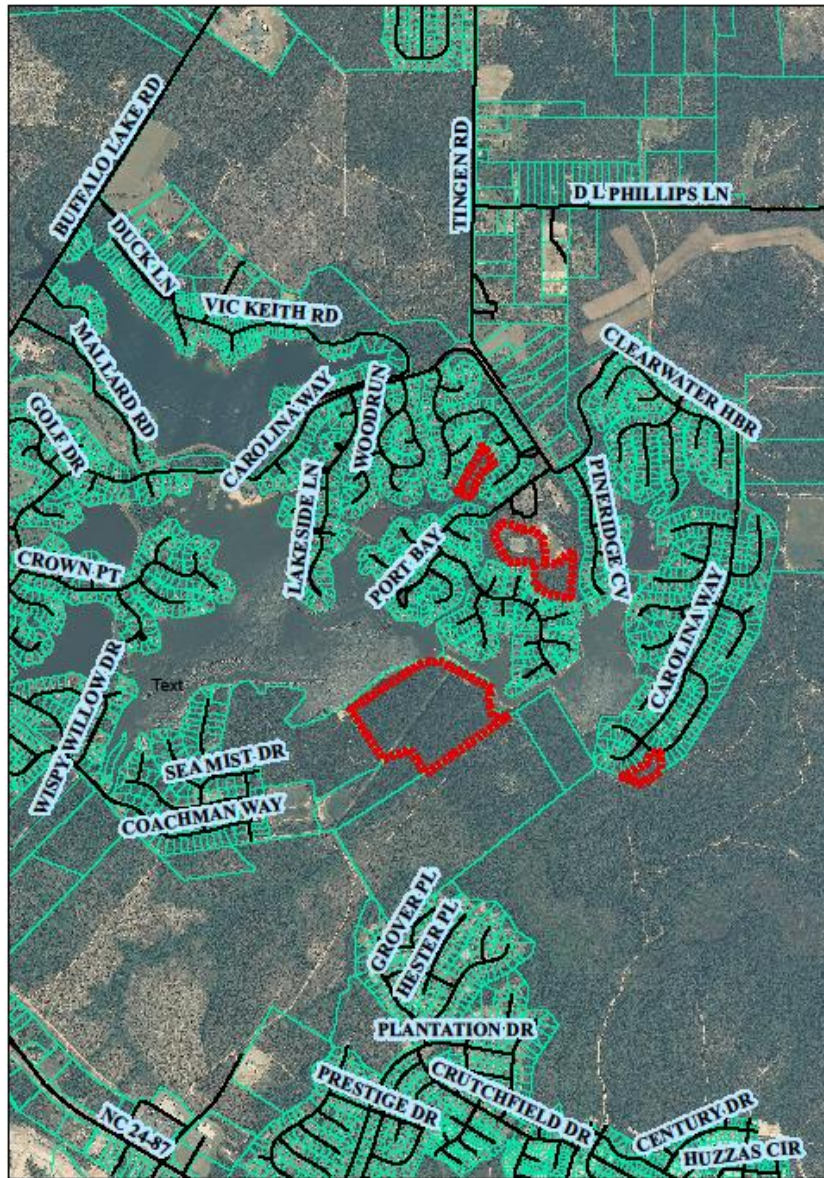
**Waterford Place**

**Walden**





## Carolina Lakes Potential RX Burn



**Harnett County NCFS staff have worked closely with this community to educate, promote and execute Prescribed Burns in their community.**

0 1,150 2,300 4,800 Feet Drawn By: GCWood - NCFS - 8-7-14

 Burn Areas





## Winding River Plantation RX Burn

**Brunswick County NCFS staff are hoping to execute a burn within this community and a neighboring one.**



0 750 1,500 3,000 Feet

Drawn By: GCWood - NCFS - 8-7-14

■■■■■■■■■■ Burn Area



# Brunswick County – Potential Prescribed Burn to educate the residents



# Questions?

James Rogers

NC Forest Service

Fire Prevention and Mitigation Staff Forester

919-857-4850

[James.B.Rogers@ncagr.gov](mailto:James.B.Rogers@ncagr.gov)

**[www.ncforestservice.gov](http://www.ncforestservice.gov)**

**[www.ncfirewise.org](http://www.ncfirewise.org)**